

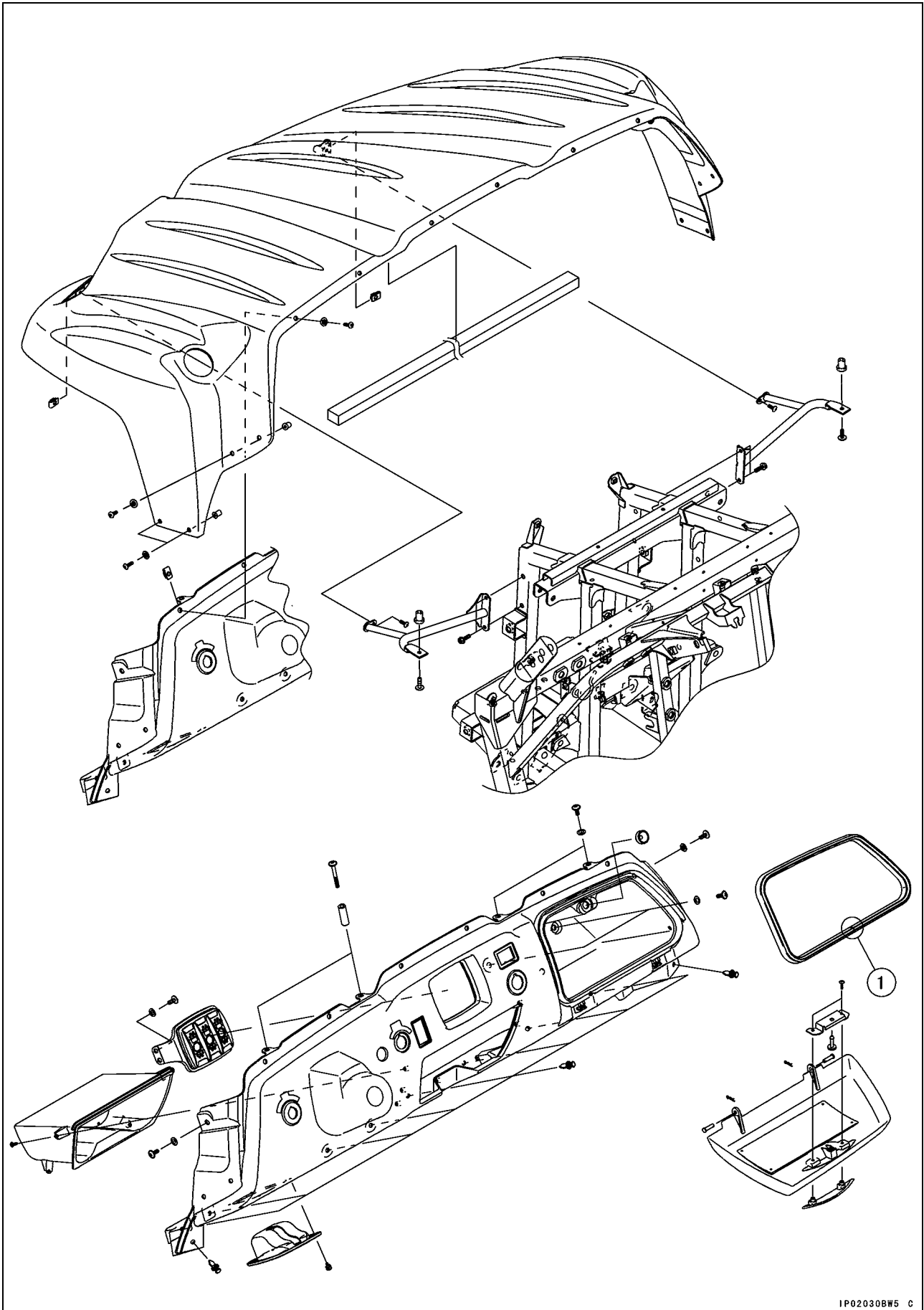
Frame

Table of Contents

Exploded View	15-2	Side Cover Removal	15-36
Seat and Seat Belts	15-14	Side Cover Installation	15-38
Seat Removal	15-14	Seat Lower Cover Removal	15-38
Seat Installation	15-14	Seat Lower Cover Installation	15-39
Seat Disassembly	15-14	Seat Lower Right Plate Removal	15-39
Seat Assembly	15-15	Seat Lower Right Plate Installation	15-40
Seat Belt Removal	15-16	Seat Lower Left Plate Removal ...	15-40
Seat Belt Installation	15-17	Seat Lower Left Plate Installation	15-40
Control Panel	15-18	Right and Left Brackets Removal	15-40
Control Panel Removal	15-18	Right and Left Brackets Installation	15-41
Control Panel Installation	15-19	Center Bracket Removal	15-41
Glove Compartment Removal	15-20	Right Frame Pipe Removal	15-42
Glove Compartment Installation	15-21	Right Frame Pipe Installation	15-42
Fenders	15-22	Center Bracket Installation	15-43
Front Fender Removal	15-22	Left Cover Removal	15-43
Front Fender Installation	15-23	Left Cover Installation	15-43
Rear Fender Removal	15-23	Guards	15-44
Rear Fender Installation	15-23	Front Guard Removal	15-44
Rear Flap Removal	15-24	Front Guard Installation	15-44
Rear Flap Installation	15-24	Front Bottom Guard Removal	15-44
Cargo Bed	15-25	Front Bottom Guard Installation ...	15-45
Cargo Bed Removal	15-25	Middle Bottom Guard Removal	15-45
Cargo Bed Installation	15-25	Middle Bottom Guard Installation	15-45
Cargo Bed Disassembly	15-26	Engine Bottom Guard Removal ...	15-45
Cargo Bed Assembly	15-29	Engine Bottom Guard Installation	15-46
Bars	15-32	Rear Bottom Guard Removal	15-46
Right and Left Bars Removal	15-32	Rear Bottom Guard Installation	15-46
Right and Left Bars Installation ...	15-32	Floorboard	15-47
Covers	15-35	Floorboard Removal	15-47
Engine Upper Cover Removal	15-35	Floorboard Installation	15-50
Engine Upper Cover Installation	15-35		
Center Cover Removal	15-36		
Center Cover Installation	15-36		

15-2 FRAME

Exploded View

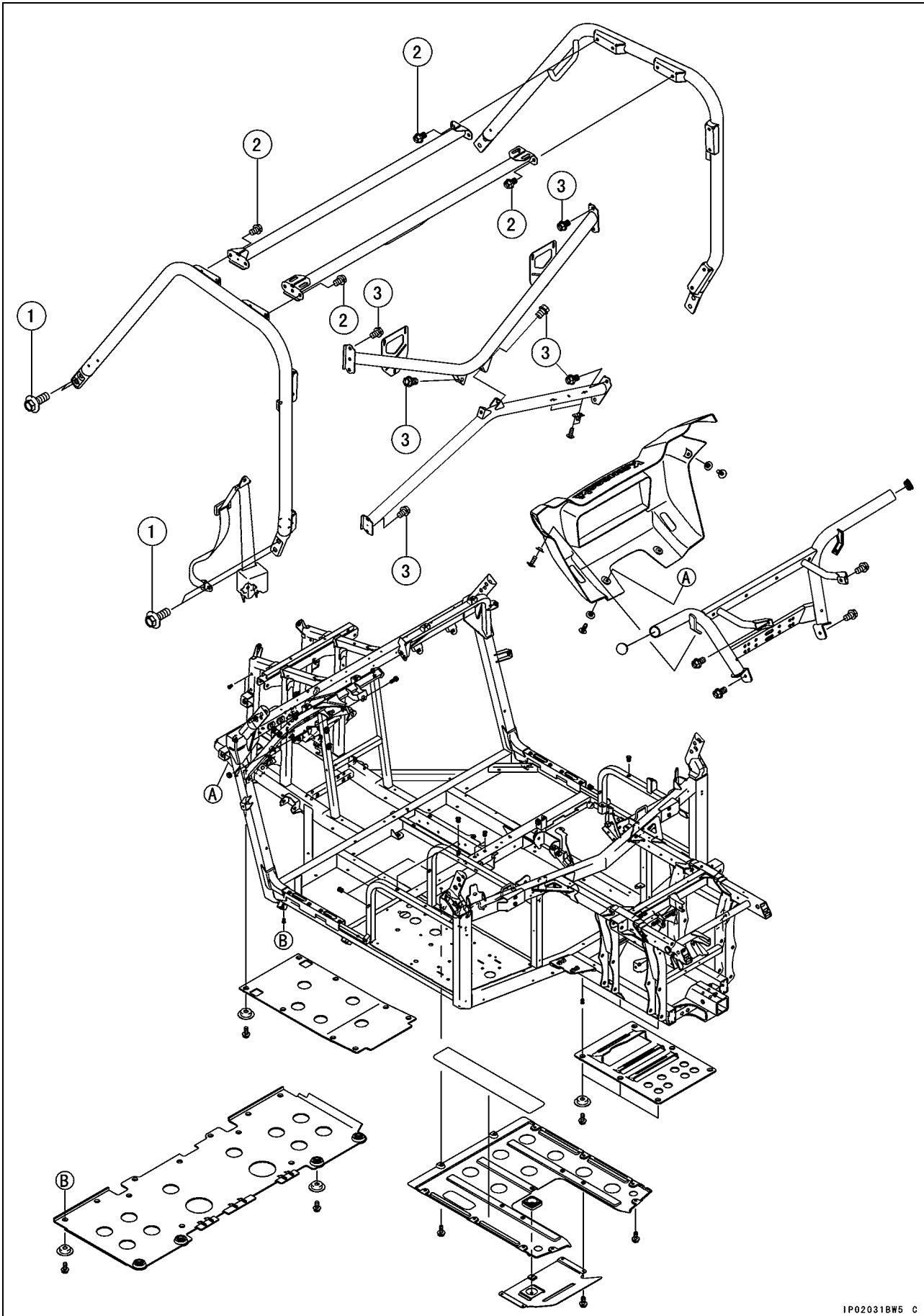


Exploded View

1. The seal ends should be at lower area and the gap is less than 3 mm (0.12 in.).

15-4 FRAME

Exploded View

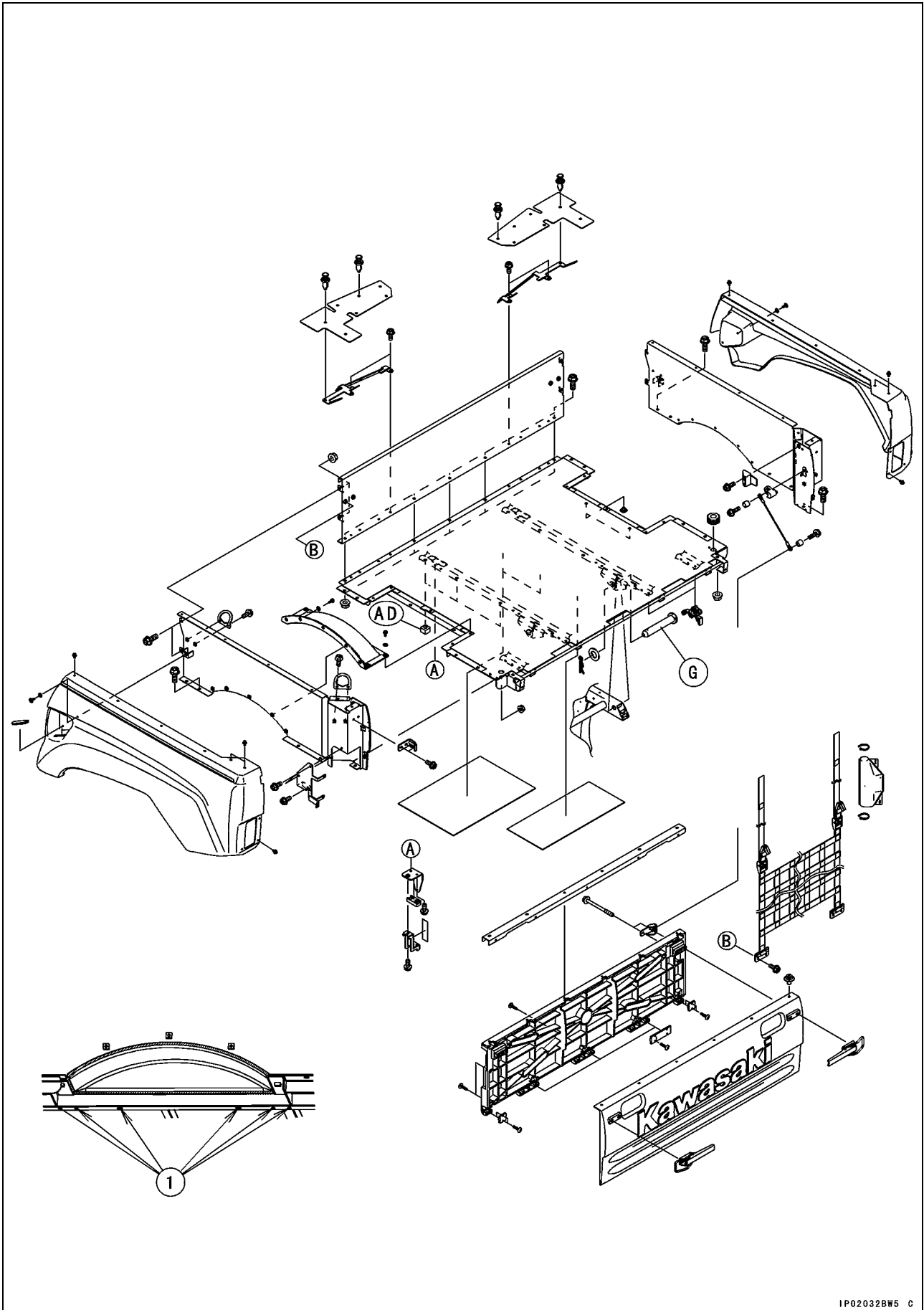


Exploded View

No.	Fastener	Torque			Remarks
		N·m	kgf·m	ft·lb	
1	Right and Left Bar Mounting Bolts	98	10	72	
2	Upper Bar Mounting Bolts	47	4.8	35	
3	Back Bar Mounting Bolts	47	4.8	35	

15-6 FRAME

Exploded View

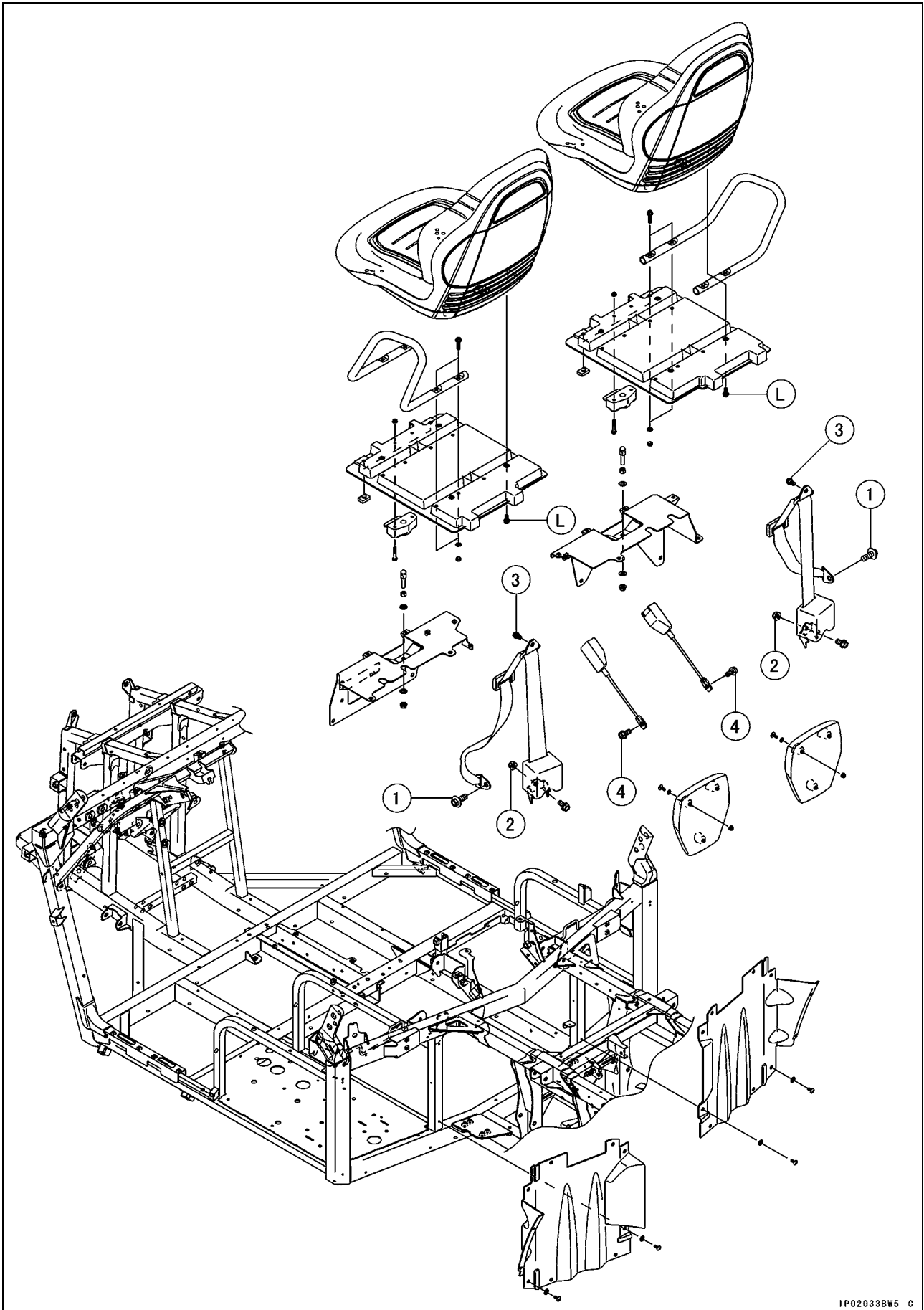


Exploded View

1. Apply sealing material to the hatched area and holes.
AD: Apply adhesive agent.
G: Apply grease.

15-8 FRAME

Exploded View



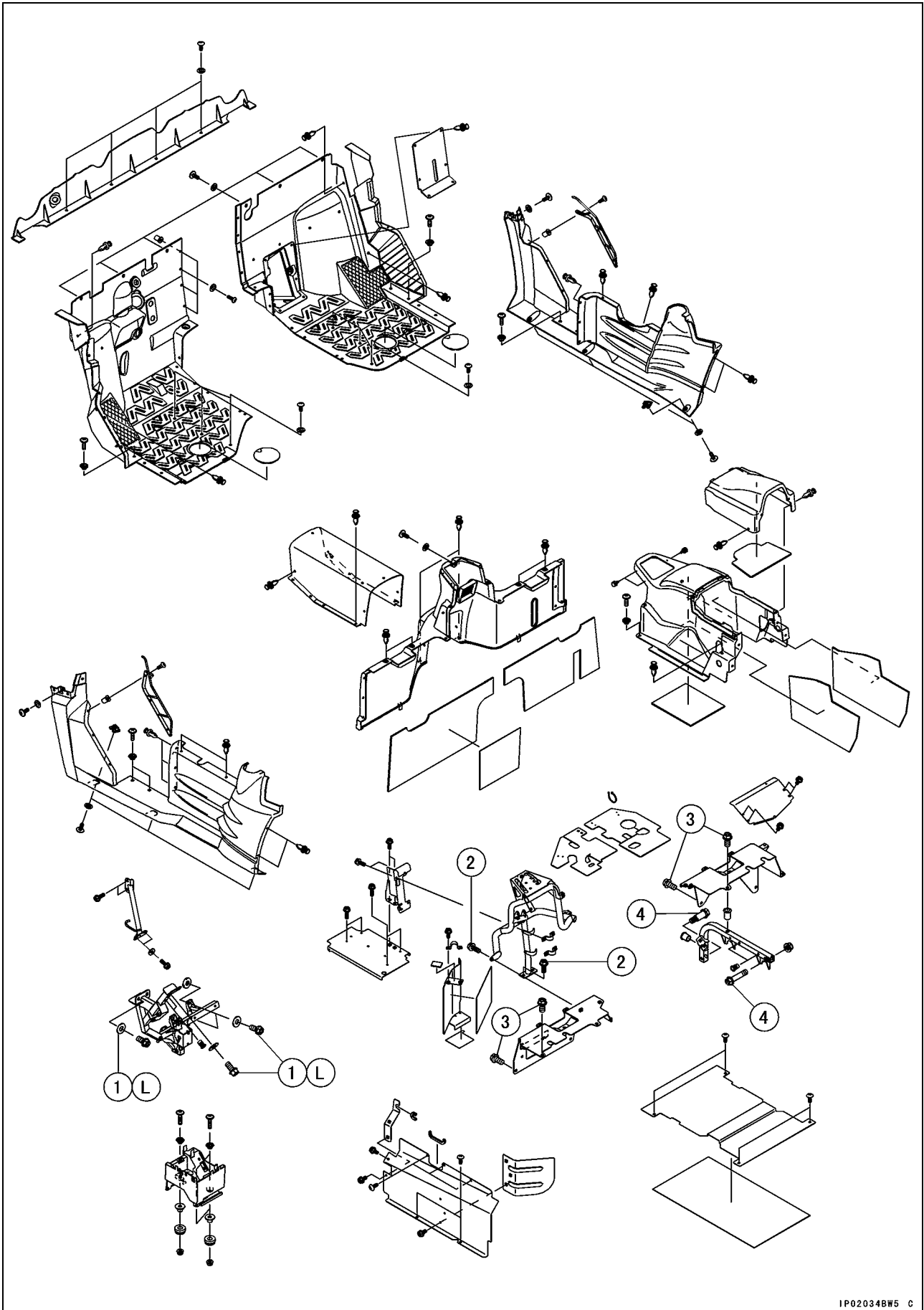
Exploded View

No.	Fastener	Torque			Remarks
		N·m	kgf·m	ft·lb	
1	Right and Left Bar Mounting Bolts	98	10	72	
2	Seat Belt Case Mounting Nuts	47	4.8	35	
3	Seat Belt Mounting Bolts	42	4.3	31	
4	Seat Belt Buckle Mounting Bolts	47	4.8	35	

L: Apply a non-permanent locking agent.

15-10 FRAME

Exploded View



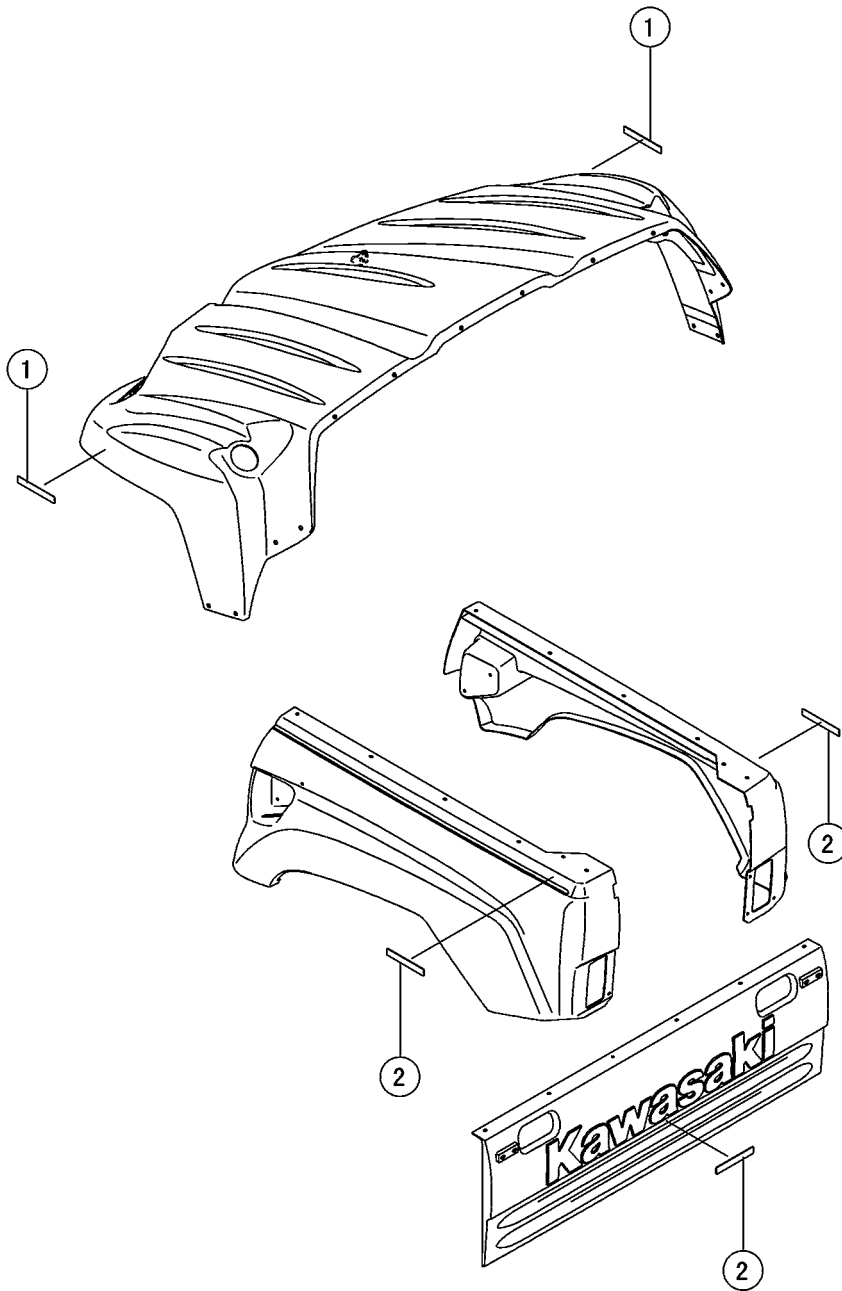
Exploded View

No.	Fastener	Torque			Remarks
		N·m	kgf·m	ft·lb	
1	Brake Pedal Bracket Mounting Bolts	34.3	3.5	25	L
2	Center Bracket Mounting Bolts	22	2.3	17	
3	Bracket Bolts	47	4.8	35	
4	Right Frame Pipe Mounting Bolts	34.3	3.5	25	

15-12 FRAME

Exploded View

CA Model



Exploded View

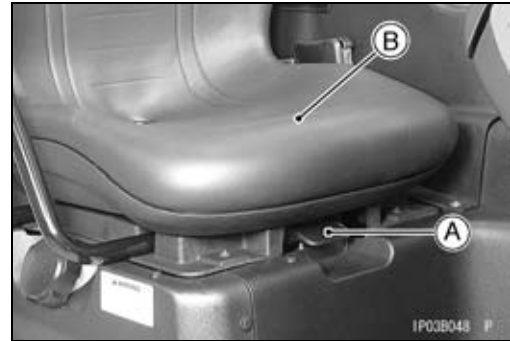
1. Reflector (Yellow)
2. Reflector (Red)

15-14 FRAME

Seat and Seat Belts

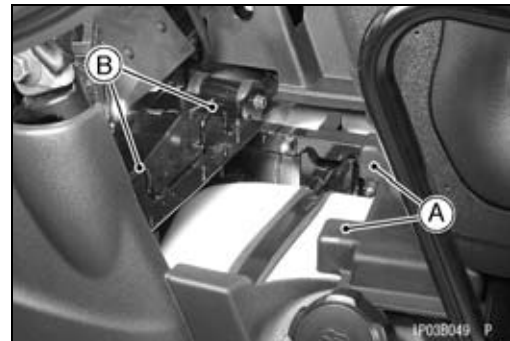
Seat Removal

- Pull the seat lock lever [A] upward.
- Lift the front edge of the seat [B], and then slide the seat forward and up.



Seat Installation

- Insert the projections [A] at the rear of the seat into the seat holders [B].



- Push down on the seat at the front and insert the pin [A] into the seat lock.
- The seat lock clicks.

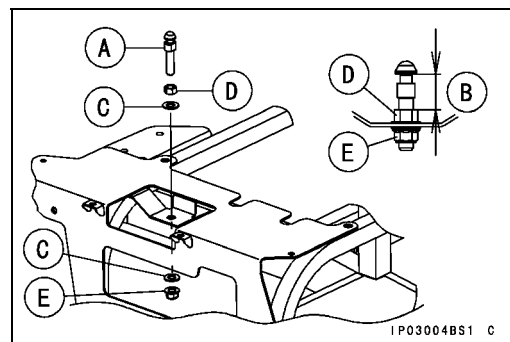


⚠ WARNING

The operator or passenger could lose control or fall out of the vehicle if the seat is loose during operation.

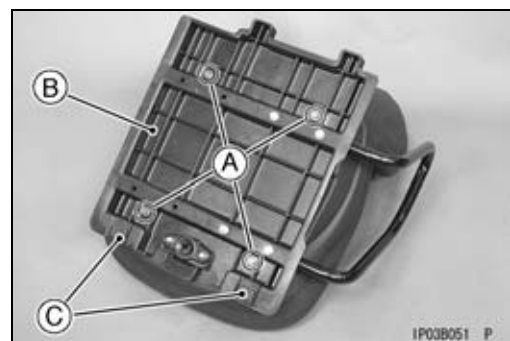
Make sure the seat is securely latched.

- When installing the pin [A], set the length [B] as shown in the figure.
 - Washers [C]
 - Nut [D]
 - Self Lock Nut [E]
 - 24.5 mm (0.965 in.) [B]



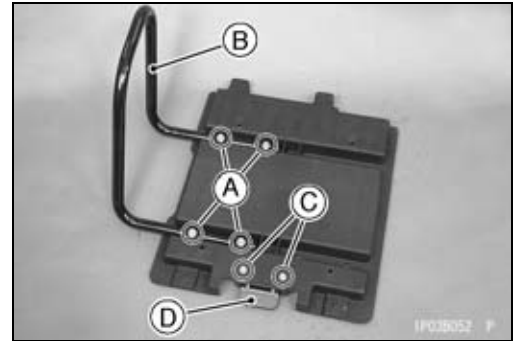
Seat Disassembly

- Remove:
 - Seat (see Seat Removal)
 - Seat Plate Bolts [A]
 - Seat Plate [B]
 - Dampers [C]



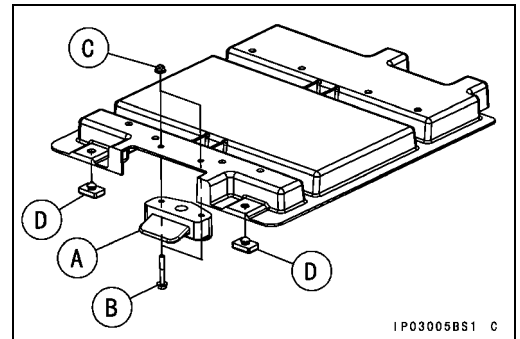
Seat and Seat Belts

- Remove:
 - Pipe Bolts [A], Washers and Nuts
 - Pipe [B]
 - Seat Lock Bolts and Nuts [C]
 - Seat Lock [D]

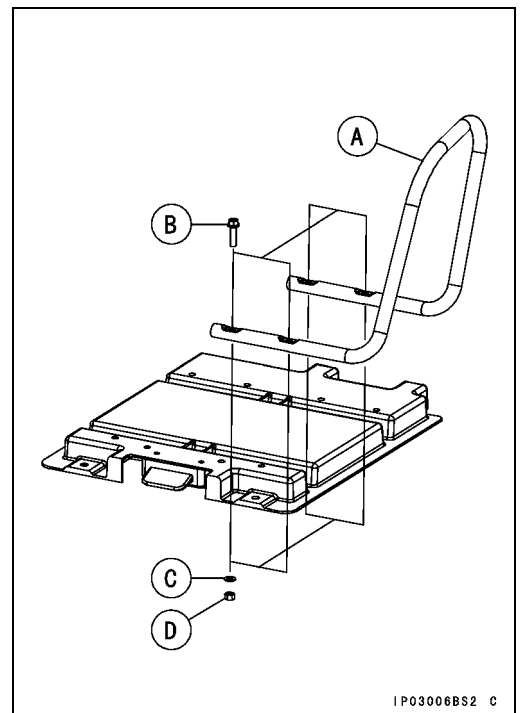


Seat Assembly

- Install:
 - Seat Lock [A]
 - Seat Lock Bolts [B] and Nuts [C]
 - Dampers [D]



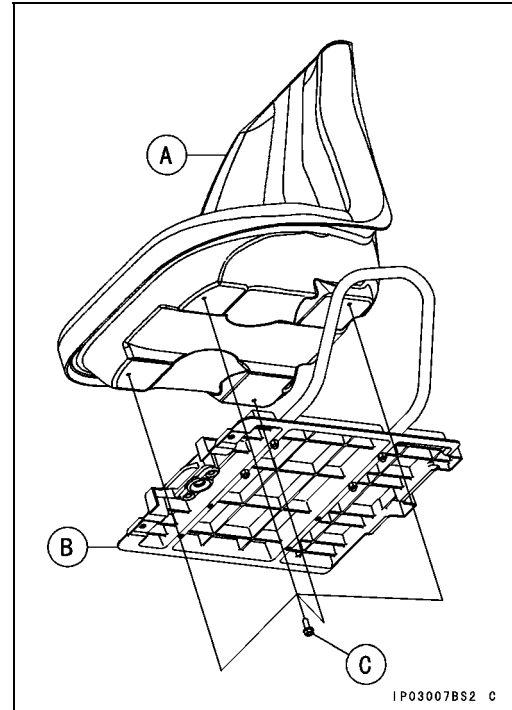
- Install:
 - Pipe [A]
 - Pipe Bolts [B], Washers [C] and Nuts [D]



15-16 FRAME

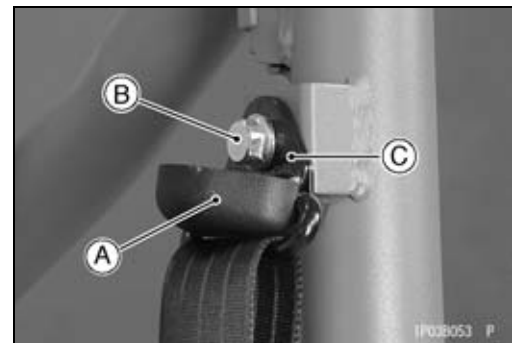
Seat and Seat Belts

- Remove:
 - Seat [A]
 - Seat Plate [B]
- Apply a non-permanent locking agent to the seat plate bolts [C] and tighten them.



Seat Belt Removal

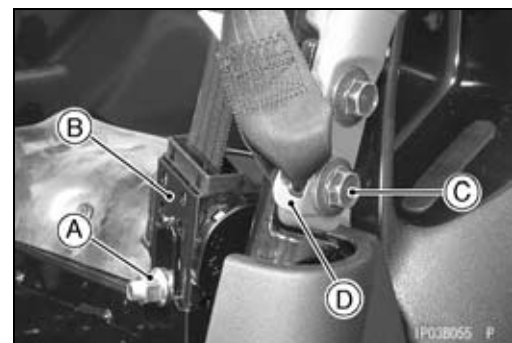
- Open the cover [A].
- Remove:
 - Seat Belt Mounting Bolt [B]
 - Upper Seat Bracket [C]



- Open the cover [A] upward.

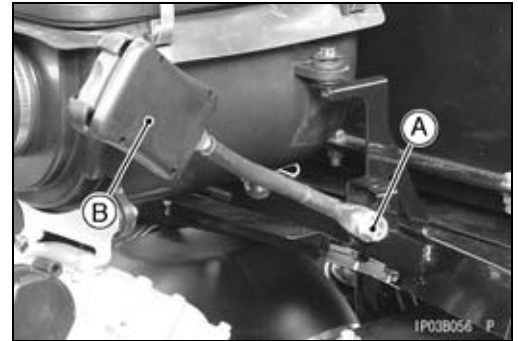


- Remove:
 - Seat Belt Case Mounting Bolts and Nut [A]
 - Seat Belt Case [B]
 - Rear Bar Mounting Bolt [C]
 - Lower Seat Bracket [D] and Seat Belt



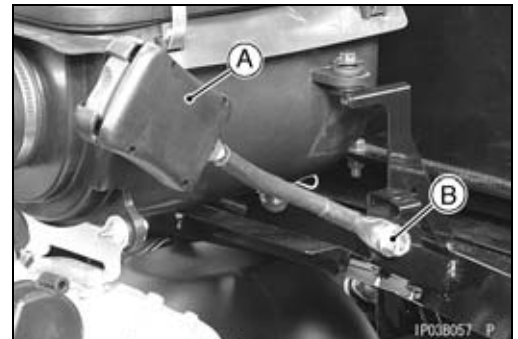
Seat and Seat Belts

- Remove:
 - Engine Upper Cover (see Engine Upper Cover Removal)
 - Seat Belt Buckle Mounting Bolt [A]
 - Seat Belt Buckle [B]

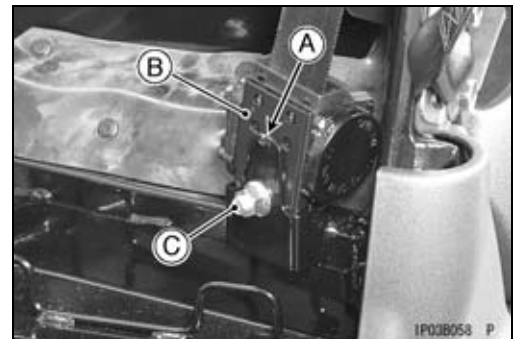


Seat Belt Installation

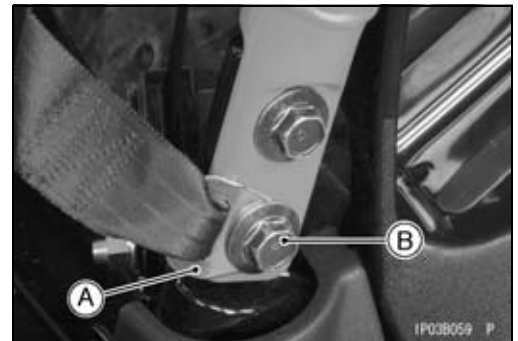
- Install:
 - Seat Belt Buckle [A] (as shown in the figure)
- Tighten:
 - Torque - Seat Belt Buckle Mounting Bolt [B]: 47 N·m (4.8 kgf·m, 35 ft·lb)**



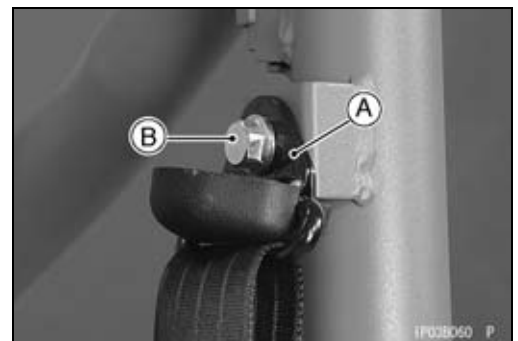
- Fit the projection [A] on the recess of the frame and install the seat belt case [B].
- Install:
 - Seat Belt Case Mounting Bolts [C] and Nut
- Tighten:
 - Torque - Seat Belt Case Mounting Bolt: 47 N·m (4.8 kgf·m, 35 ft·lb)**
- Fit the cover in the case securely.



- Install:
 - Lower Seat Bracket [A] (as shown in the figure)
 - Bar Mounting Bolt [B]
- Tighten:
 - Torque - Right and Left Bar Mounting Bolts: 98 N·m (10 kgf·m, 72 ft·lb)**



- Install:
 - Upper Seat Bracket [A]
 - Seat Belt Mounting Bolt [B]
- Tighten:
 - Torque - Seat Belt Mounting Bolt: 42 N·m (4.3 kgf·m, 31 ft·lb)**
- Fit the cover on the bracket securely.

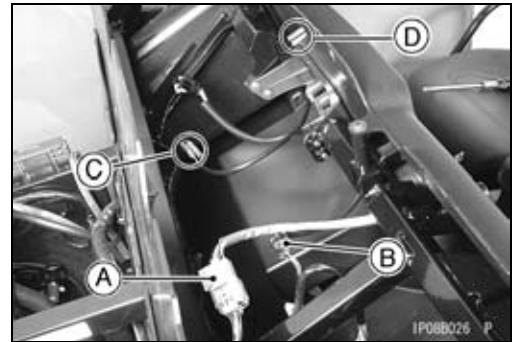


15-18 FRAME

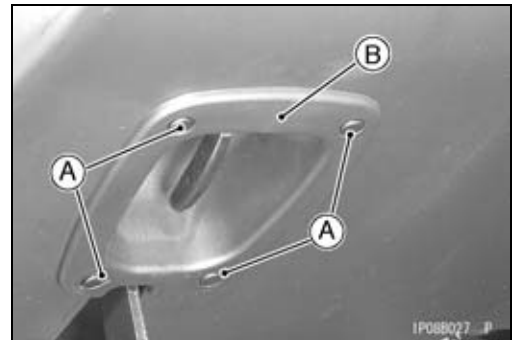
Control Panel

Control Panel Removal

- Lift and hold the front fender (see Front Fender Removal in the Frame chapter).
- Remove:
 - Steering Wheel (see Steering Wheel Removal in the Steering chapter)
- Disconnect:
 - Ignition Switch Lead Connector [A]
 - 2WD/4WD Shift Switch Lead Connector [B]
 - Power Outlet Connector Lead Connector [C]
 - Hour Meter Lead Connectors [D]



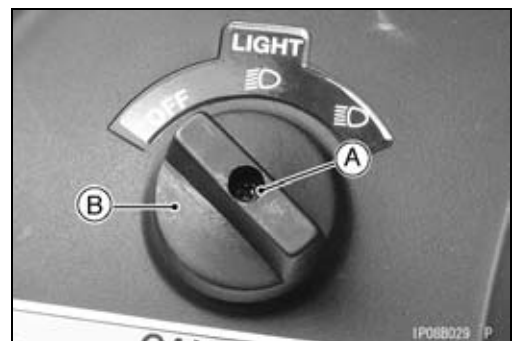
- Remove:
 - Quick Rivets [A]
 - Cover [B]



- Remove:
 - Plug [A]

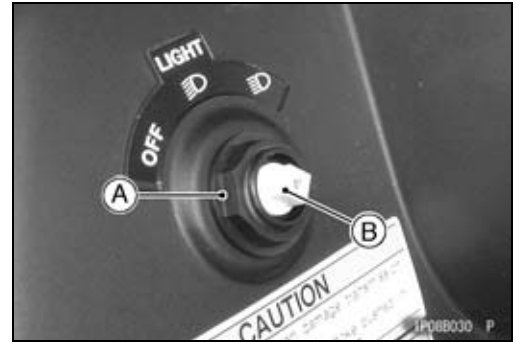


- Remove:
 - Screw [A]
 - Knob [B]



Control Panel

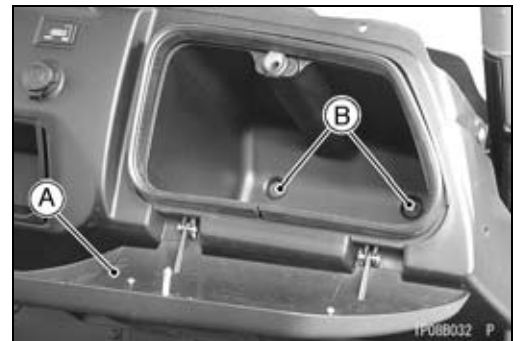
- Remove:
Mounting Nut [A]
Light Switch [B]



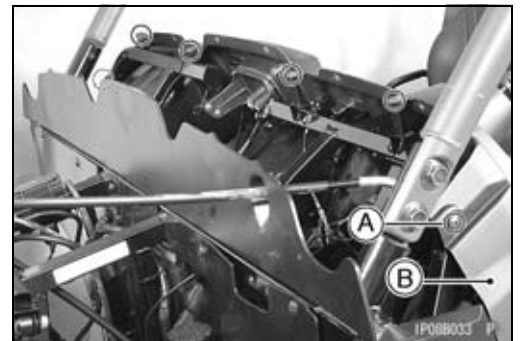
- Remove:
Quick Rivets [A]



- Open the cover [A].
- Remove:
Screws [B] and Collars

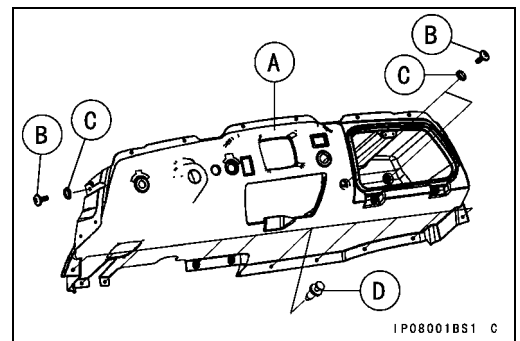


- Remove:
Screws [A] and Collars
Control Panel [B]



Control Panel Installation

- Install:
Control Panel [A]
Screws [B] L = 16 mm (0.63 in.)
Collars [C] L = 4 mm (0.16 in.)
Quick Rivets [D]



15-20 FRAME

Control Panel

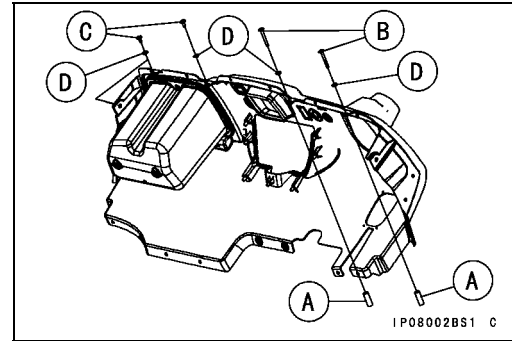
- Install:

Collars [A] L = 42 mm (1.65 in.)

Screws [B] L = 56 mm (2.20 in.)

Screws [C] L = 16 mm (0.63 in.)

Collars [D] L = 4 mm (0.16 in.)



- Fit the projection [A] on the light switch [B] into the recess in the control panel.

- Install:

Mounting Nut

Screw

Knob

Plug

- Install removed parts.



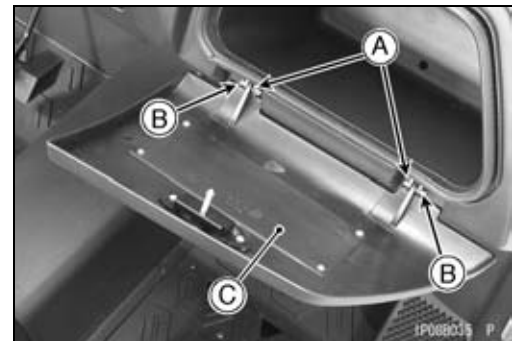
Glove Compartment Removal Right Glove Compartment Cover

- Remove:

Clips [A]

Pins [B]

Right Glove Compartment Cover [C]



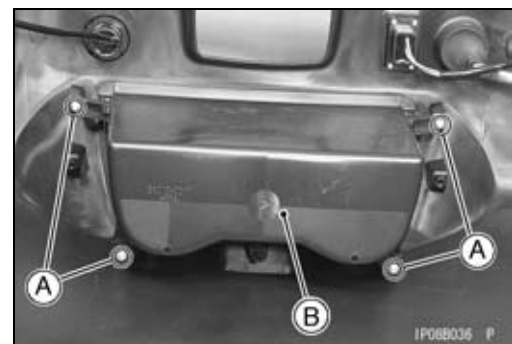
Center Glove Compartment

- Remove:

Control Panel (see Control Panel Removal)

Screws [A]

Center Glove Compartment [B]

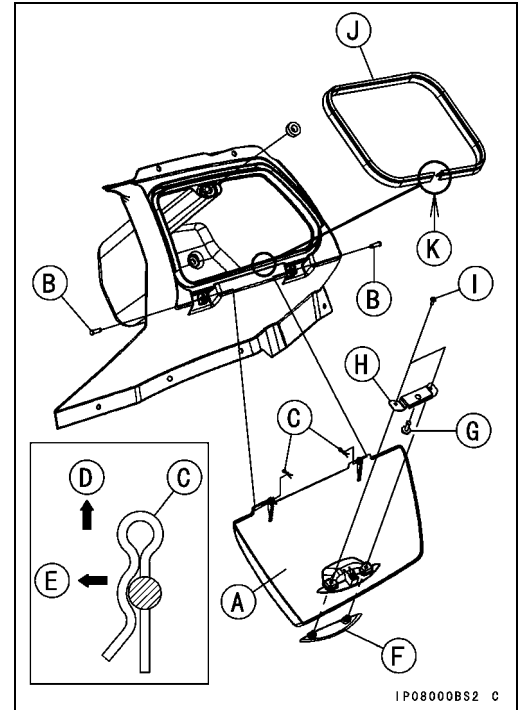


Control Panel

Glove Compartment Installation

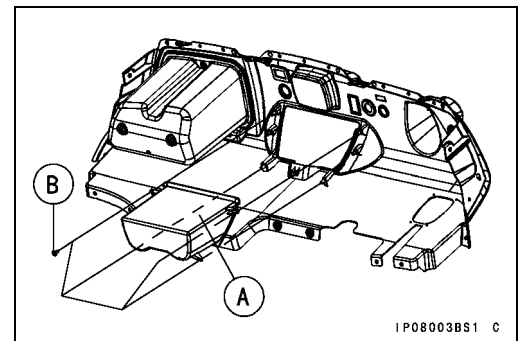
Right Glove Compartment Cover

- Install:
 - Right Glove Compartment Cover [A]
 - Pins [B]
- Install the clips [C] as shown in the figure.
 - Up [D]
 - Forward [E]
- When installing the cover [F], install the following parts.
 - Pin [G] and Bracket [H]
 - Screws [I]
- When installing the trim seal [J], the seal ends [K] should be at lower area and the gap is less than 3 mm (0.12 in.).



Center Glove Compartment

- Install:
 - Center Glove Compartment [A]
 - Screws [B]

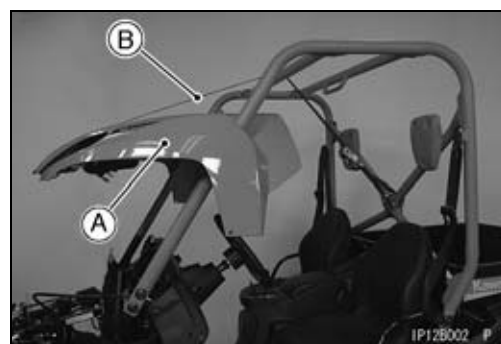
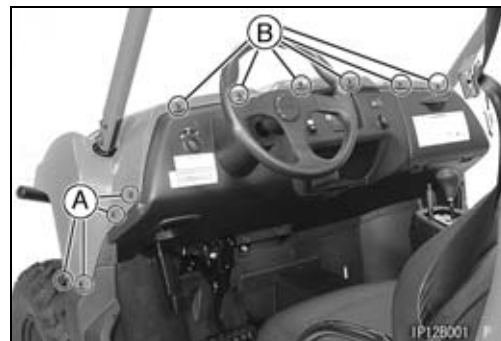
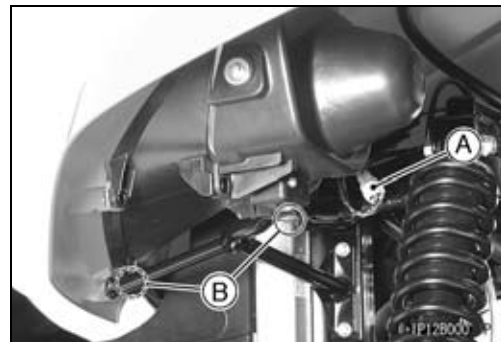


15-22 FRAME

Fenders

Front Fender Removal

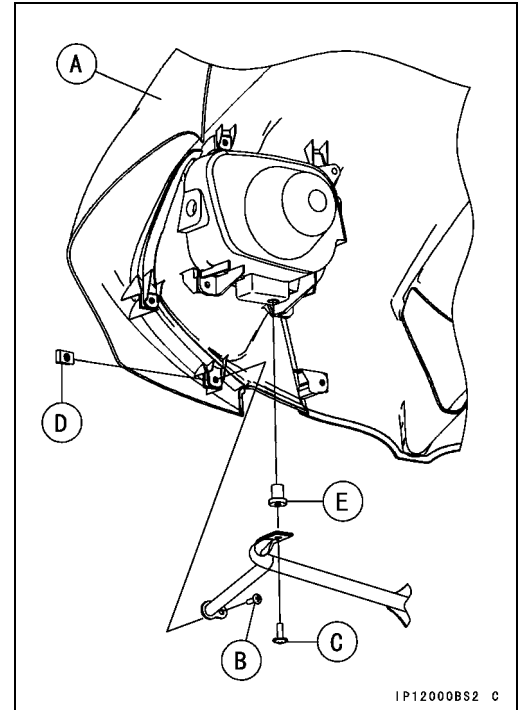
- Disconnect:
 - Headlight Lead Connector [A] (both sides)
 - Remove:
 - Screws [B] (both sides)
-
- Remove:
 - Screws [A] (both sides)
 - Screws [B]
-
- When holding the front fender [A] at upper position, lift and hold it with a suitable belt [B] firmly.
-
- When removing the front fender from the frame, remove the right and left bar (see Right and Left Bars Removal).
 - Remove the front fender.



Fenders

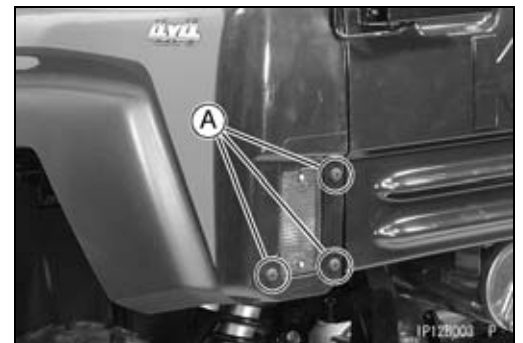
Front Fender Installation

- Install (both sides):
 - Front Fender [A]
 - Screw [B] M5, L = 16 mm (0.63 in.)
 - Screw [C] M6, L = 22 mm (0.87 in.)
 - Clip Nut [D]
 - Rubber Nut [E]
- Install:
 - Screws
 - Right and Left Bars (If they are removed) (see Right and Left Bars Installation)

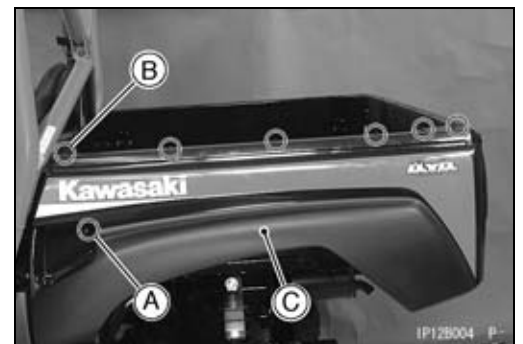


Rear Fender Removal

- Remove:
 - Quick Rivets [A]

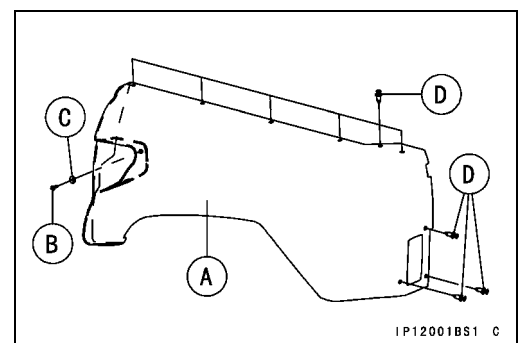


- Remove:
 - Screw [A] and Collar
 - Quick Rivets [B]
 - Rear Fender [C]



Rear Fender Installation

- Install:
 - Rear Fender [A]
 - Screw [B] and Collar [C]
 - Quick Rivets [D]

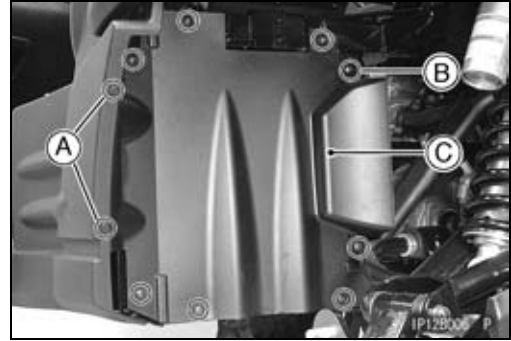


15-24 FRAME

Fenders

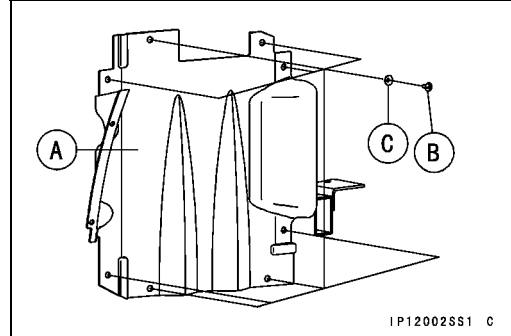
Rear Flap Removal

- Remove:
 - Rear Wheel (see Wheel Removal in the Wheels/Tires chapter)
 - Quick Rivets [A]
 - Tapping Screws [B] and Collars
 - Rear Flap [C]

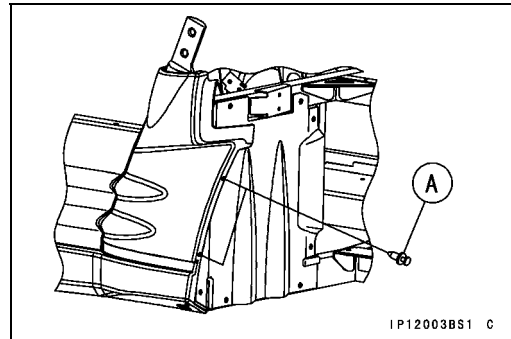


Rear Flap Installation

- Install:
 - Rear Flap [A]
 - Tapping Screws [B] and Collars [C]



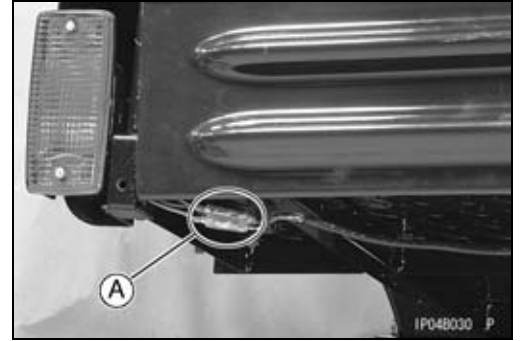
- Install:
 - Quick Rivets [A]
 - Rear Wheel (see Wheel Installation in the Wheels/Tires chapter)



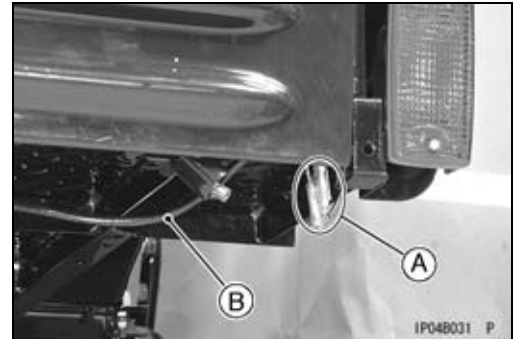
Cargo Bed

Cargo Bed Removal

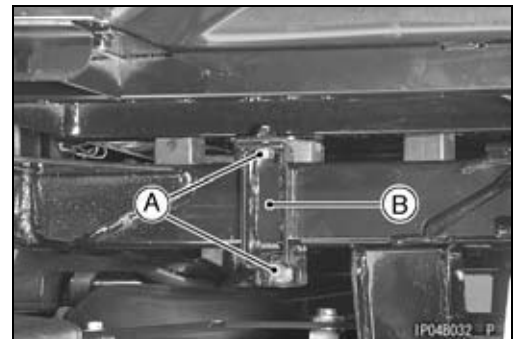
- Remove:
 - Rear Fenders (see Rear Fender Removal)
 - Tail/Brake Light Lead Connectors [A]



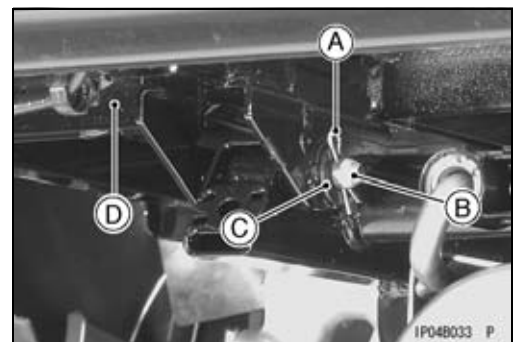
- Remove:
 - Tail/Brake Light Lead Connectors [A]
- Remove the harness [B] from the clamps.



- Remove:
 - Bolts [A] (both sides)
 - Brackets [B] (both sides)

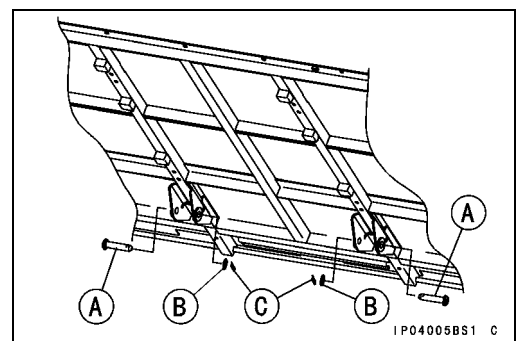


- Remove:
 - Snap Pins [A] (both sides)
 - Cargo Bed Mounting Pins [B] and Washers [C] (both sides)
 - Cargo Bed [D]



Cargo Bed Installation

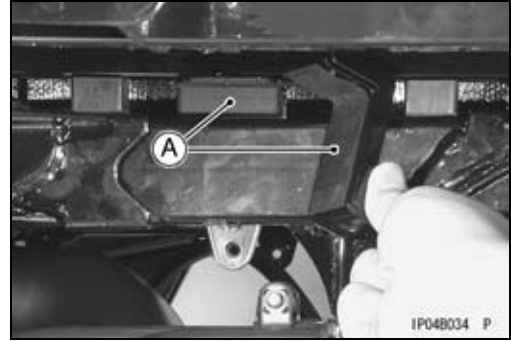
- Grease to the cargo bed mounting pins [A].
- Install:
 - Cargo Bed
 - Cargo Bed Mounting Pins, Washers [B] and Snap Pins [C]



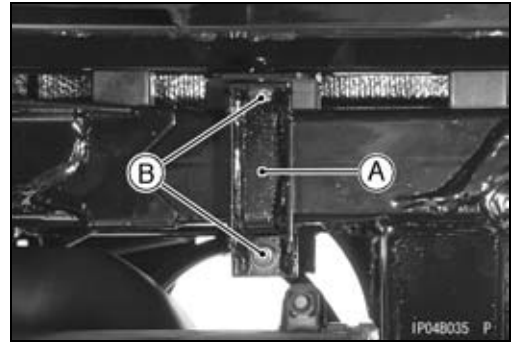
15-26 FRAME

Cargo Bed

- Check that the rubber dampers [A] are properly in place.



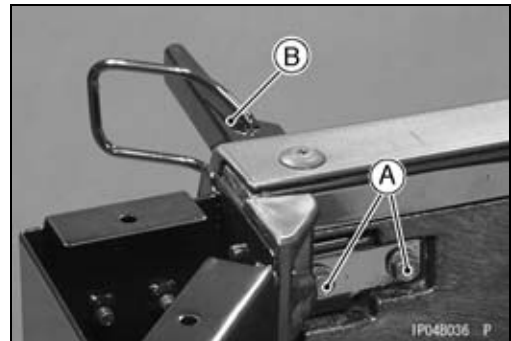
- Install:
Brackets [A] (both sides)
Bolts [B] (both sides)



- Install the harness into the clamps.
- Install:
Tail/Brake Light Lead Connectors
Rear Fenders (see Rear Fender Installation)

Cargo Bed Disassembly

- Remove:
Rear Fenders (see Rear Fender Removal)
Bolts [A]
Hook Lever [B] Bracket, and Wire End (both sides)

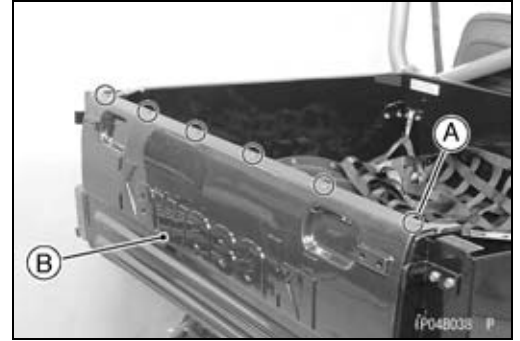


- Remove:
Screws [A]

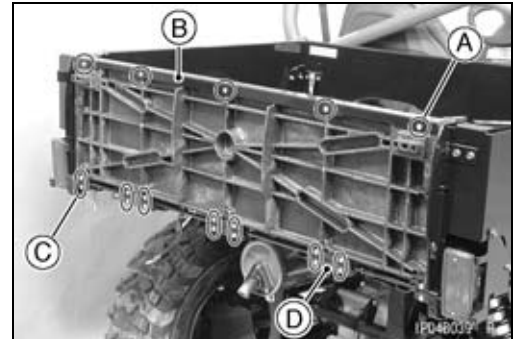


Cargo Bed

- Remove:
Quick Rivets [A]
Tail Gate Cover [B]



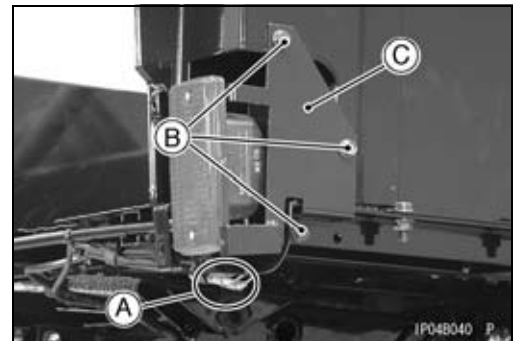
- Remove:
Screws [A]
Reinforce [B]
Screws [C]
Stoppers [D]



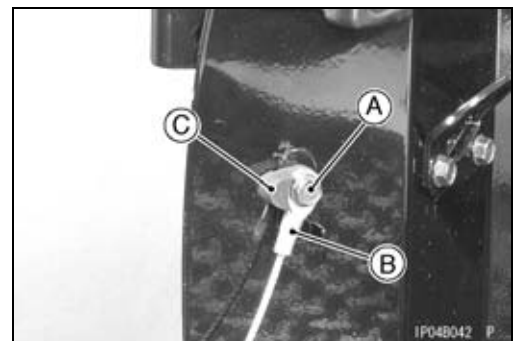
- Remove:
Tail Gate [A]



- Disconnect the taillight lead connectors [A].
- Remove:
Bolts [B]
Taillight Bracket [C]



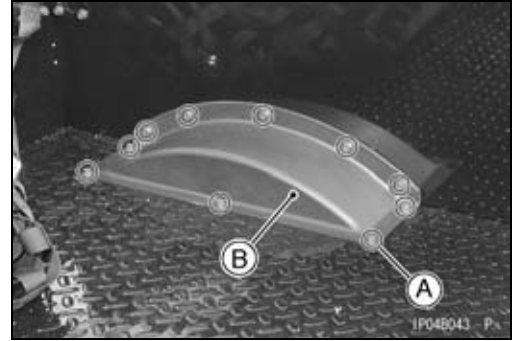
- Remove:
Bolts [A] (both sides)
Wires [B] (both sides)
Dampers [C] (both sides)
Collar (both sides)



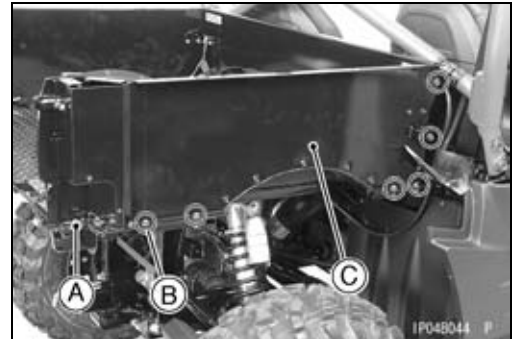
15-28 FRAME

Cargo Bed

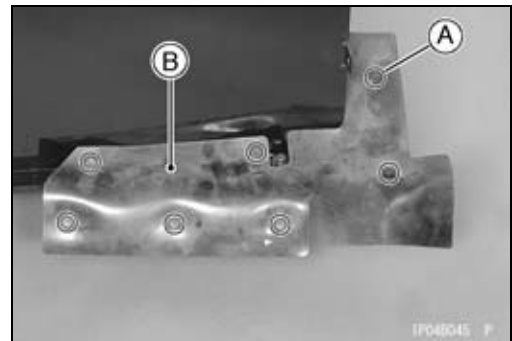
- Remove:
Bolts [A] and Collars (both sides)
Middle Rear Fenders [B] (both sides)



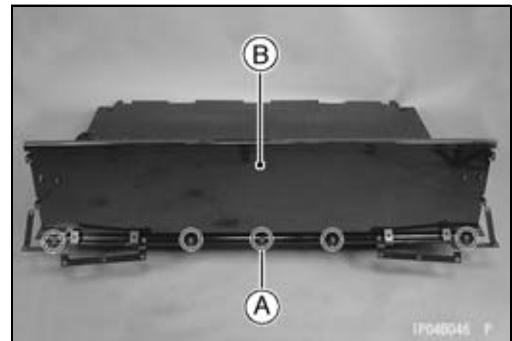
- Remove:
Bolts [A] (both sides)
Bolts [B] and Nuts (both sides)
Plates [C] (both sides)



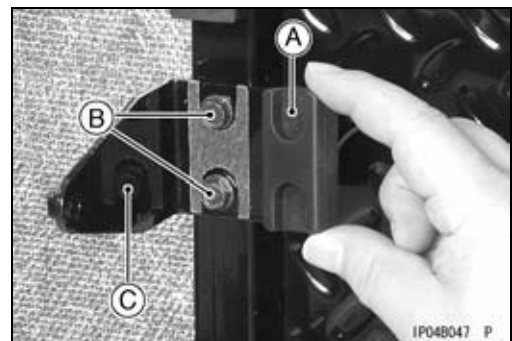
- Remove:
Cargo Bed (see Cargo Bed Removal)
Quick Rivets [A] (both sides)
Rubber Cover [B] (both sides)



- Remove:
Bolts [A]
Plate [B]



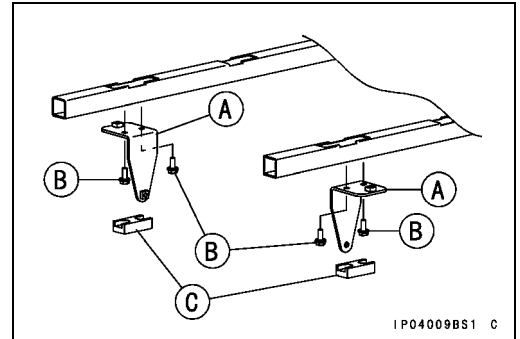
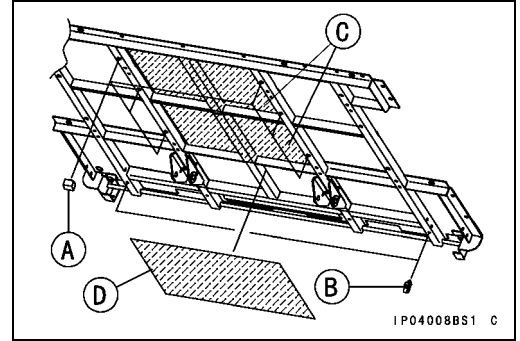
- Remove:
Dampers [A] (both sides)
Bolts [B] (both sides)
Brackets [C] (both sides)



Cargo Bed

Cargo Bed Assembly

- Apply adhesive agent to the cargo bed rubber dampers [A].
- Install:
 - Cargo Bed Rubber Dampers
 - Clamps [B]
- When installing the insulators, install them as shown in the figure.
 - Insulators [C], 280 mm × 415 mm (11.02 in. × 16.34 in.)
 - Insulator [D], 180 mm × 415 mm (7.09 in. × 16.34 in.)
- Install:
 - Brackets [A]
 - Bolts [B]
 - Dampers [C]



15-30 FRAME

Cargo Bed

• Install:

Cargo Bed Base [A]

Front Plate [B]

Side Plates [C] (both sides)

Bolts [D]: M6, L = 20 mm (0.79 in.)

Nuts [E]

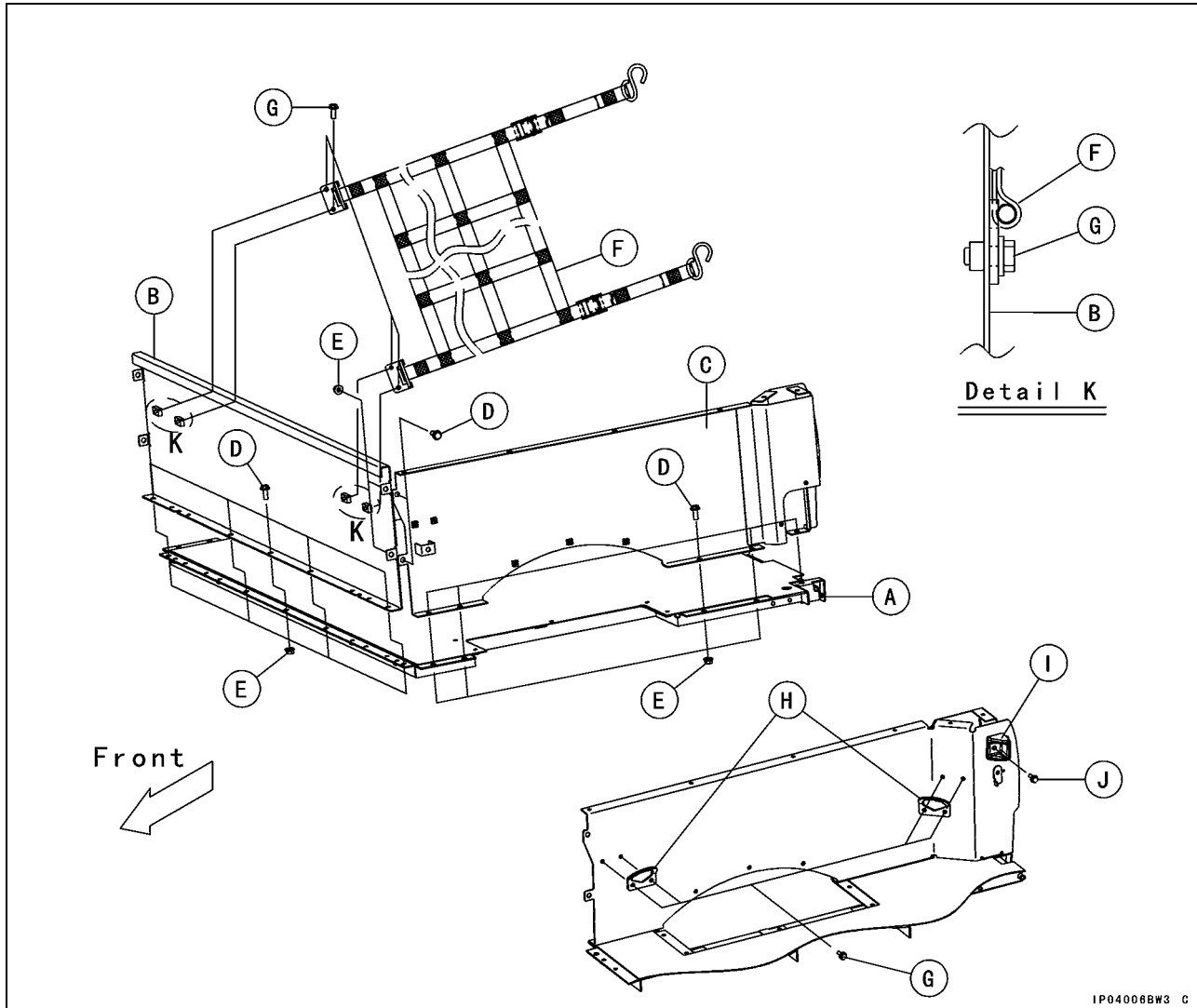
Cargo Net [F]

Bolts [G]: M6, L = 12 mm (0.47 in.)

Hooks [H]

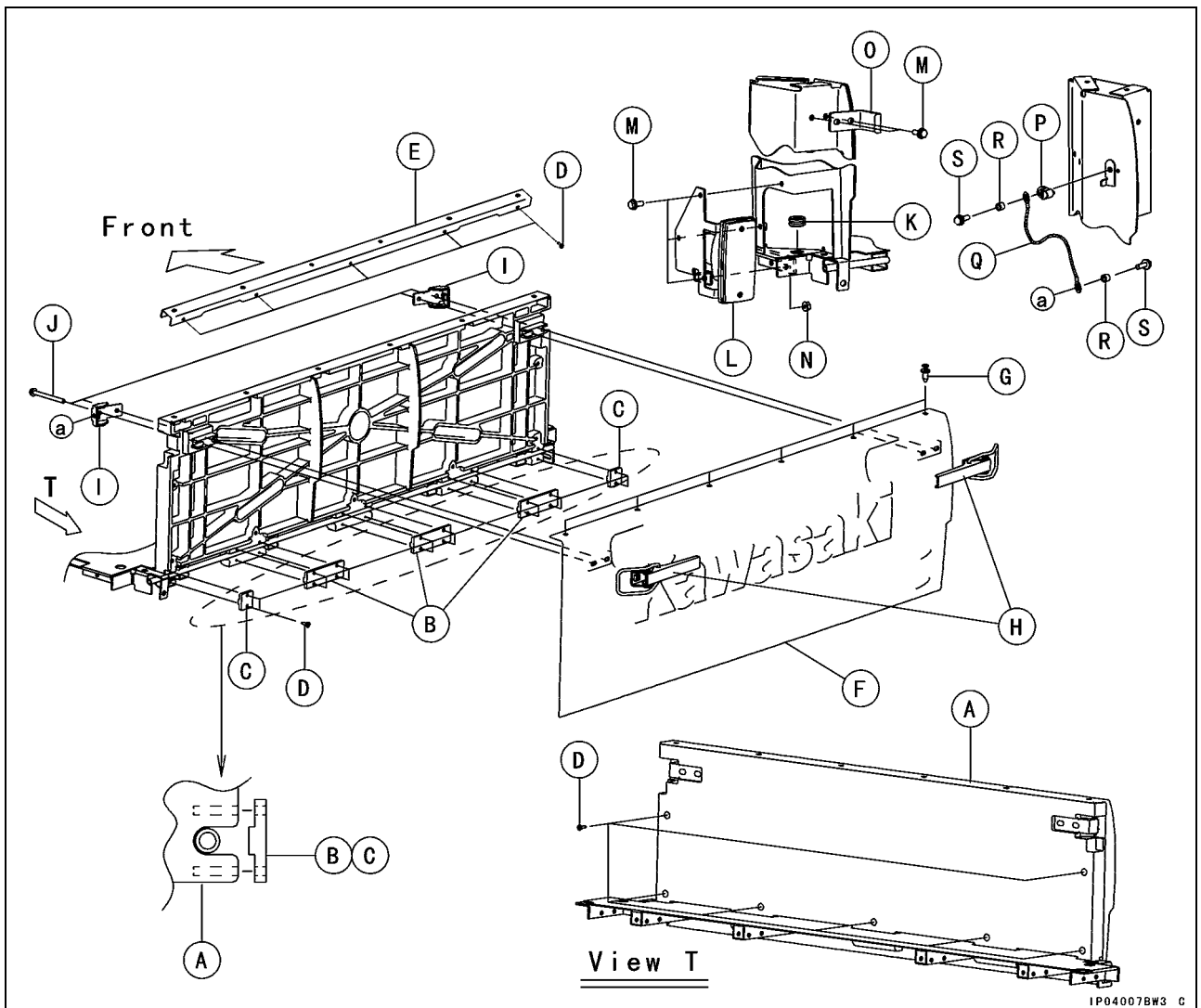
Stopper [I]

Bolts [J]: M6, L = 16 mm (0.63 in.)



Cargo Bed

- Install:
 - Tail Gate [A]
 - Stoppers [B]
 - Stoppers [C]
 - Screws [D]
 - Reinforce [E]
 - Tail Gate Cover [F]
 - Quick Rivets [G]
 - Hook Levers [H]
 - Brackets [I]
 - Bolts [J]: M6, L = 65 mm (2.56 in.)
 - Grommet [K]
 - Taillight Bracket [L] (both sides)
 - Bolts [M]: M6, L = 14 mm (0.55 in.)
 - Nuts [N]
 - Hooks [O] (both sides)
 - Dampers [P] (both sides)
 - Wires [Q] (both sides)
 - Collars [R]
 - Bolts [S]: M6, L = 18 mm (0.71 in.)
 - Rear Fenders (see Rear Fender Installation)



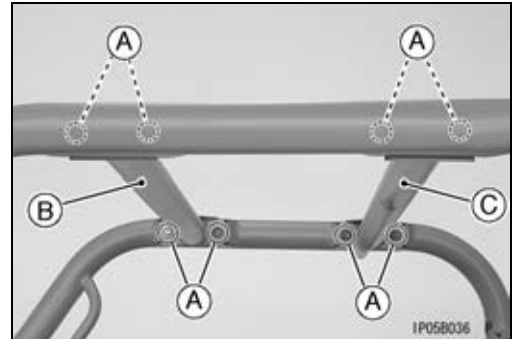
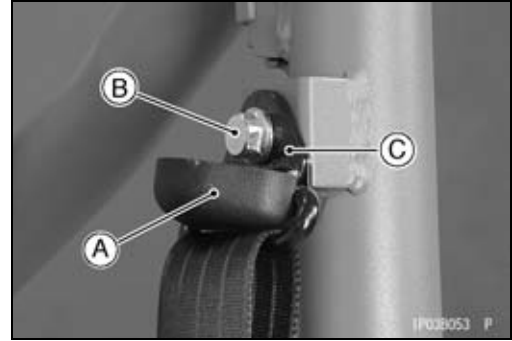
15-32 FRAME

Bars

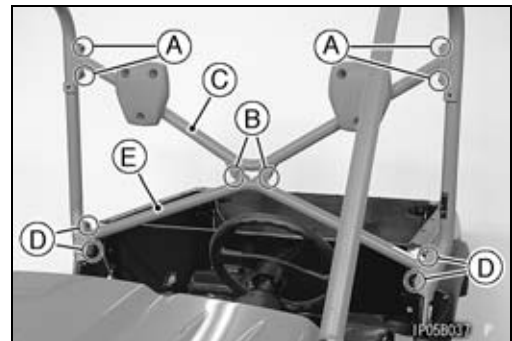
Right and Left Bars Removal

- Remove:
 - Seats (see Seat Removal)
- Open the cover [A].
- Remove:
 - Seat Belt Mounting Bolt [B]
 - Upper Seat Bracket [C]

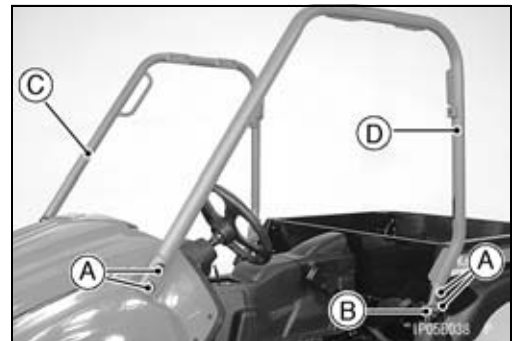
- Remove:
 - Upper Bar Mounting Bolts [A]
 - Front Upper Bars [B]
 - Rear Upper Bars [C]



- Remove:
 - Breather Hoses
 - Back Bar Mounting Bolts [A]
 - Back Bar Mounting Bolts [B]
 - Upper Back Bar [C]
 - Back Bar Mounting Bolts [D]
 - Lower Back Bar [E]

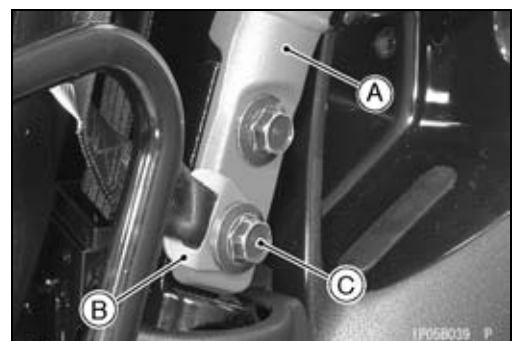


- Remove:
 - Mounting Bolts [A] and Lower Seat Bracket [B] (both sides)
 - Right Bar [C]
 - Left Bar [D]



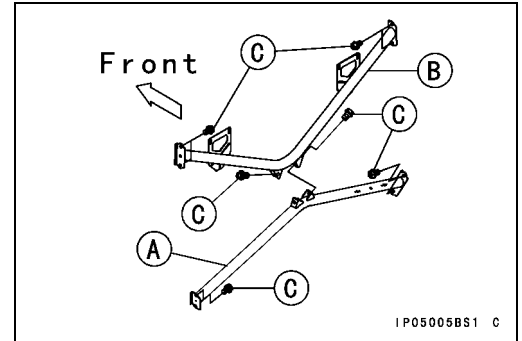
Right and Left Bars Installation

- Install:
 - Right and Left Bar [A]
 - Lower Seat Bracket [B] (both sides)
 - Mounting Bolts [C] (temporarily)

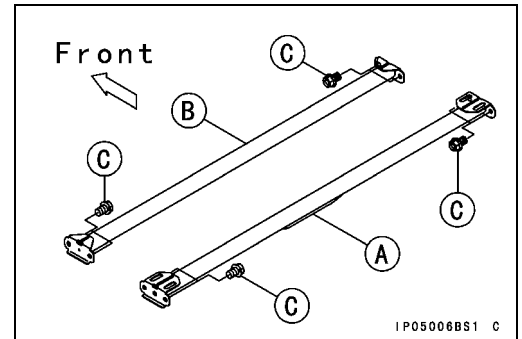


Bars

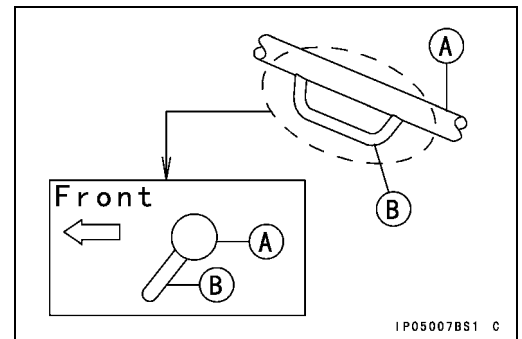
- Install:
 - Lower Back Bar [A]
 - Upper Back Bar [B]
 - Back Bar Mounting Bolts [C] (temporarily)



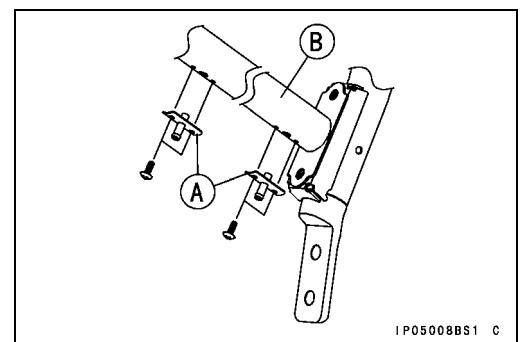
- Install:
 - Rear Upper Bar [A]
 - Front Upper Bar [B]
 - Upper Bar Mounting Bolts [C] (temporarily)



- Install the rear upper bar [A] so that the hand grip [B] faces forward.



- When installing the fittings [A], install them to lower back bar [B] as shown in the figure.

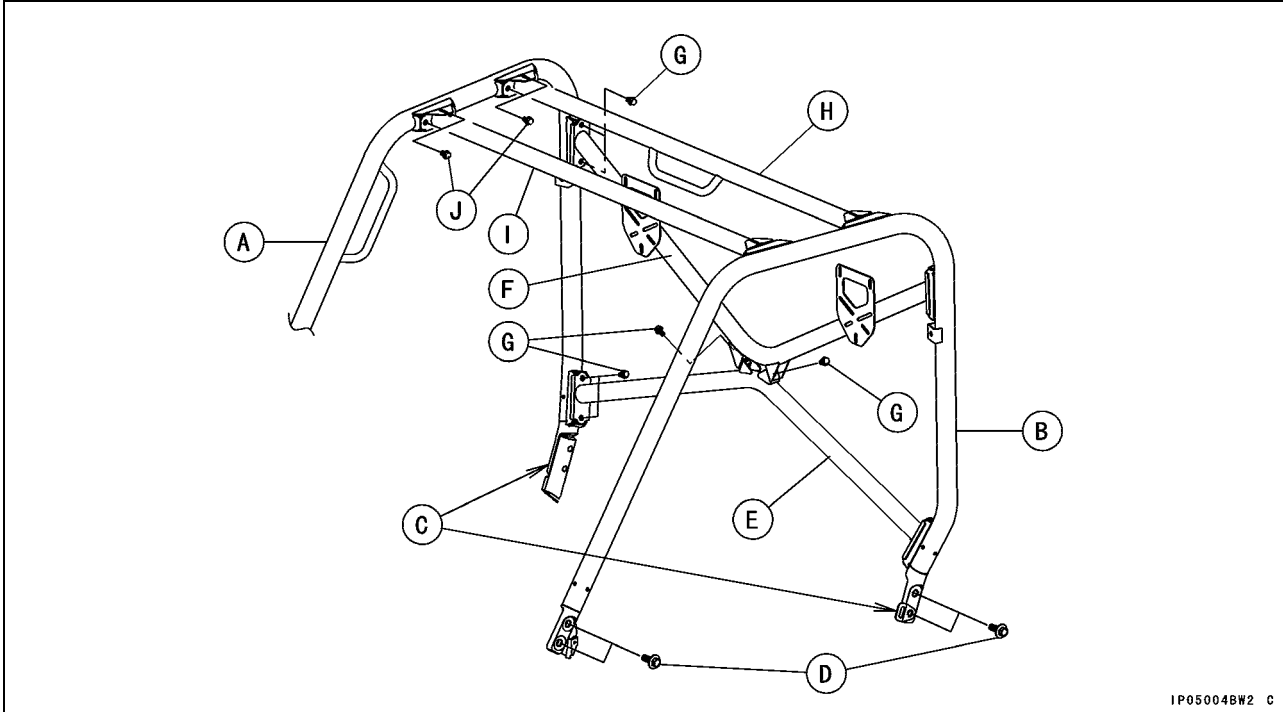


- Tighten:
 - Torque - Right and Left Bar Mounting Bolts: 98 N·m (10 kgf·m, 72 ft·lb)
 - Back Bar Mounting Bolts: 47 N·m (4.8 kgf·m, 35 ft·lb)
 - Upper Bar Mounting Bolts: 47 N·m (4.8 kgf·m, 35 ft·lb)

- Install the upper seat bracket (see Seat Belt Installation).
- Install the removed parts.

15-34 FRAME

Bars



IP05004BW2 C

- [A] Right Bar
- [B] Left Bar
- [C] Lower Seat Brackets (both sides)
- [D] Right and Left Bar Mounting Bolts
- [E] Lower Back Bar
- [F] Upper Back Bar
- [G] Back Bar Mounting Bolts
- [H] Rear Upper Bar
- [I] Front Upper Bar
- [J] Upper Bar Mounting Bolts

Covers

Engine Upper Cover Removal

- Remove:
 - Seats (see Seat Removal)
 - Small Quick Rivet [A]
 - Quick Rivet [B]
 - Screw [C] and Collar

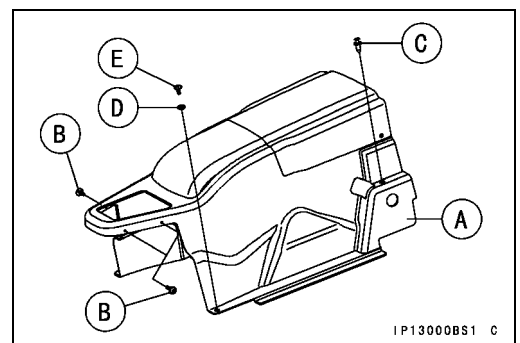
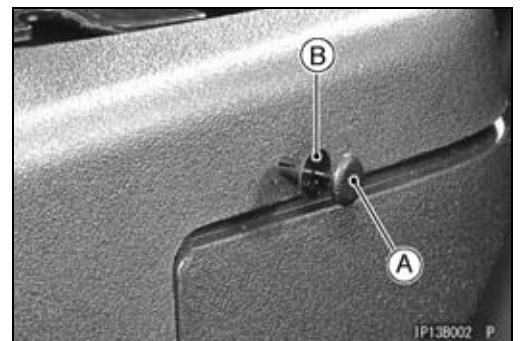
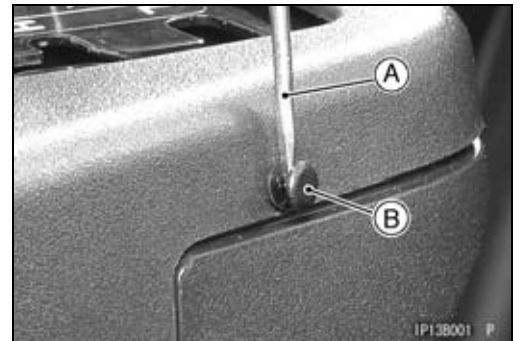
○When removing the small rivet, insert thin driver [A] between the pin [B] and socket.

○Remove the pin [A] and socket [B] from the cover.

- Remove:
 - Small Quick Rivets [A]
 - Quick Rivet [B]
 - Screw [C] and Collar
 - Engine Upper Cover [D]

Engine Upper Cover Installation

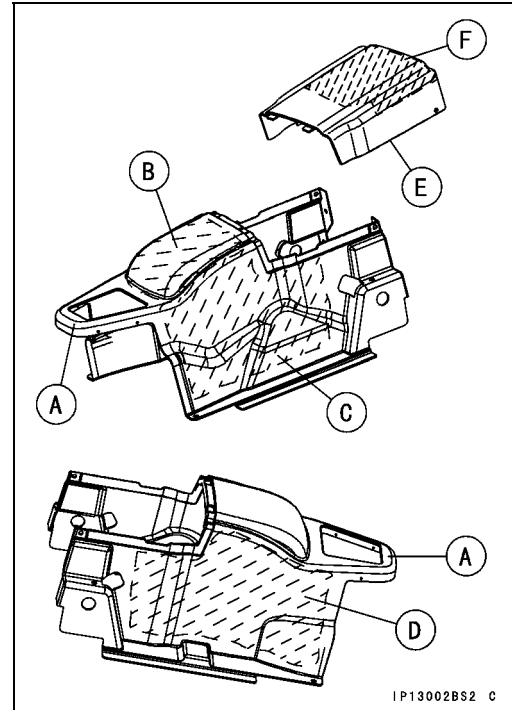
- Install:
 - Engine Upper Cover [A]
 - Small Quick Rivets [B]
 - Quick Rivets [C] (both sides)
 - Collars [D] (both sides)
 - Screws [E]: L = 22 mm (0.87 in.)



15-36 FRAME

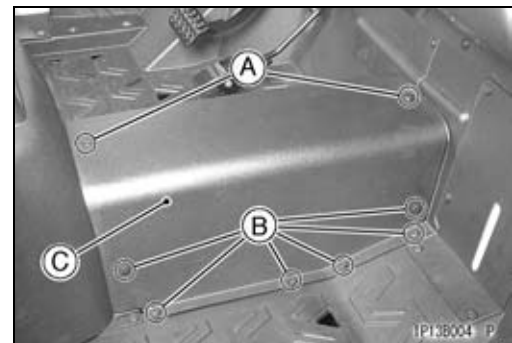
Covers

- When installing the insulators, install them as shown in the figure.
- Do not protrude the insulators beyond the edge of the engine upper cover [A].
 - Insulator [B] (P/No. 16073-0044)
 - Insulator [C] (P/No. 16073-0042)
 - Insulator [D] (P/No. 16073-0043)
 - Air Cleaner Housing Cap [E]
 - Insulator [F] (P/No. 16073-0066)



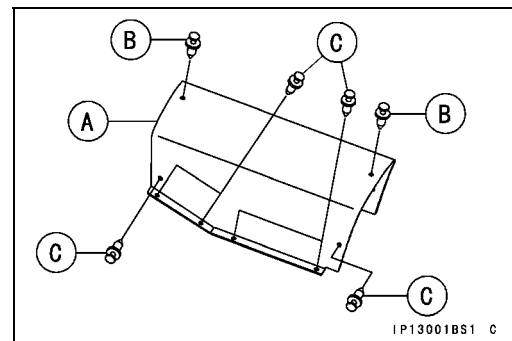
Center Cover Removal

- Remove:
 - Quick Rivets [A]
 - Quick Rivets [B] (both sides)
 - Center Cover [C]



Center Cover Installation

- Install:
 - Center Cover [A]
 - Quick Rivets [B]
 - Quick Rivets [C] (both sides)



Side Cover Removal

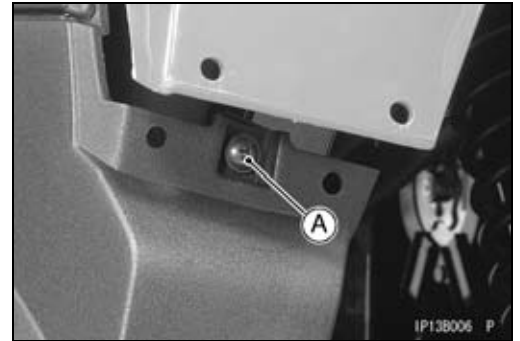
Right Side Cover

- Remove:
 - Right Seat (see Seat Removal)
 - Quick Rivets [A]

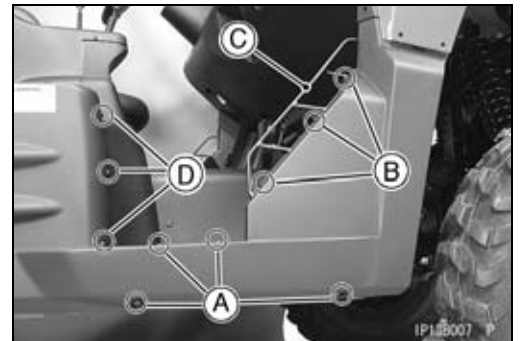


Covers

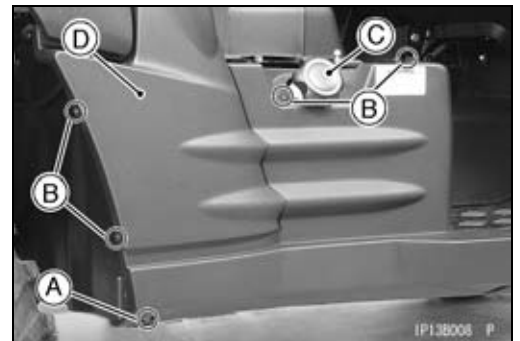
- Remove:
Screw [A] and Collar



- Remove:
Screws [A] and Collars
Screws [B]
Guard [C]
Quick Rivets [D]



- Remove:
Screw [A] and Collar
Quick Rivets [B]
Fuel Tank Cap [C]
Right Side Cover [D]

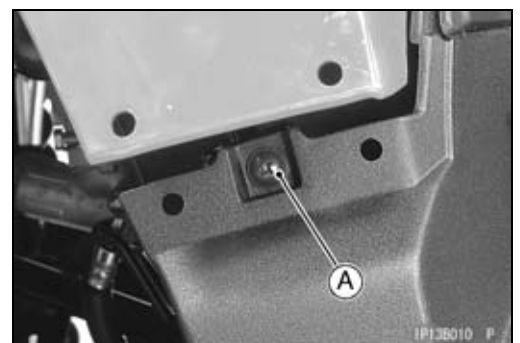


Left Side Cover

- Remove:
Left Seat (see Seat Removal)
Quick Rivets [A]



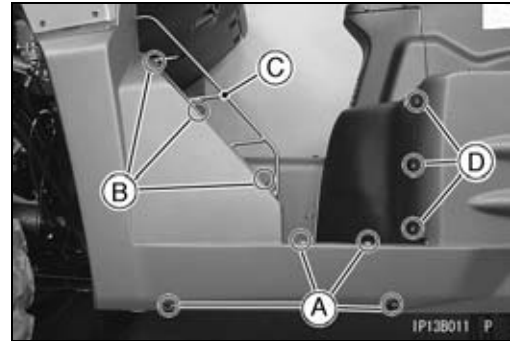
- Remove:
Screw [A] and Collar



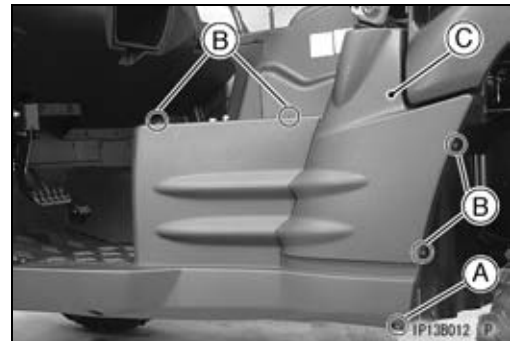
15-38 FRAME

Covers

- Remove:
 - Screws [A] and Collars
 - Screws [B]
 - Guard [C]
 - Quick Rivets [D]

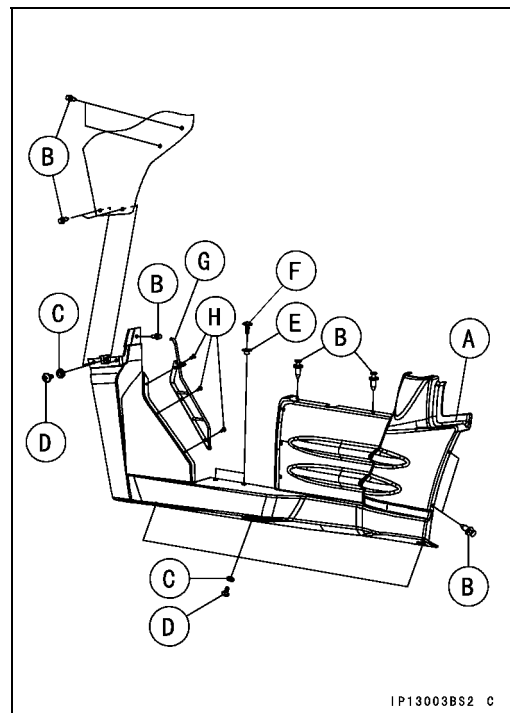


- Remove:
 - Screw [A] and Collar
 - Quick Rivets [B]
 - Left Side Cover [C]



Side Cover Installation

- Install:
 - Right Side Cover [A]
 - Quick Rivets [B]
 - Collars [C]: L = 4 mm (0.16 in.)
 - Screws [D]: M6, L = 16 mm (0.63 in.)
 - Collars [E]: L = 6 mm (0.24 in.)
 - Screws [F]: M6, L = 22 mm (0.87 in.)
 - Guard [G]
 - Screws [H]: M5
- Install the left side cover according to the same procedure as the right side cover.
- Install:
 - Fuel Tank Cap (Right Side)



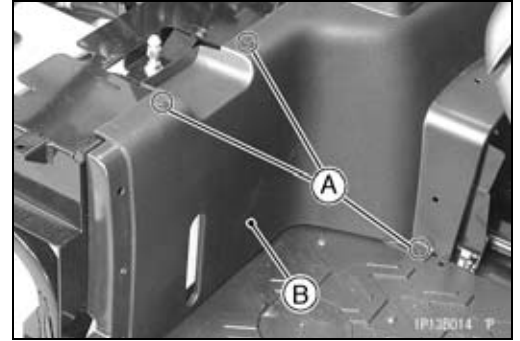
Seat Lower Cover Removal

- Remove:
 - Engine Upper Cover (see Engine Upper Cover Removal)
 - Center Cover (see Center Cover Removal)
 - Side Covers (see Side Cover Removal)
 - Screw [A] and Collar



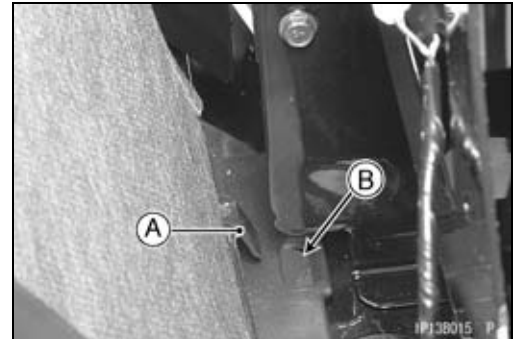
Covers

- Remove:
 - Quick Rivets [A] (both sides)
 - Seat Lower Cover [B]



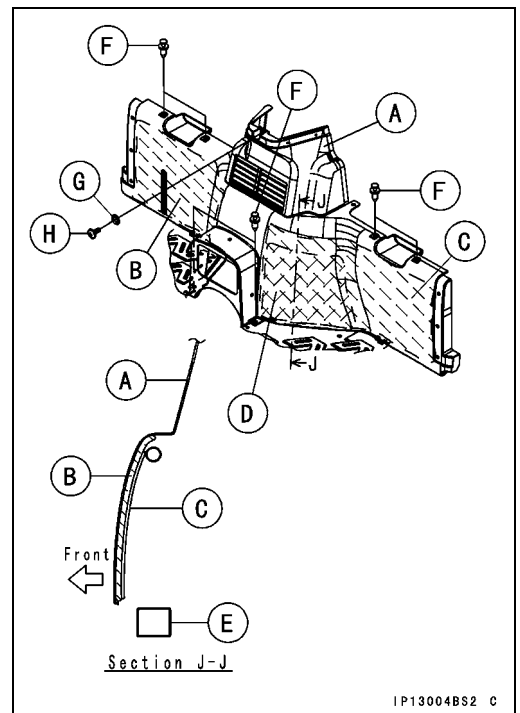
Seat Lower Cover Installation

- Insert the projection [A] of the cover into the hole [B]. (both sides).



- When installing the insulators, install them as shown in the figure.
- Do not protrude the insulators beyond the edge of the lower seat cover [A].
 - Insulator [B] (P/No. 16073-0070)
 - Insulator [C] (P/No. 16073-0050)
 - Insulator [D] (P/No. 16073-0060)
 - Frame [E]

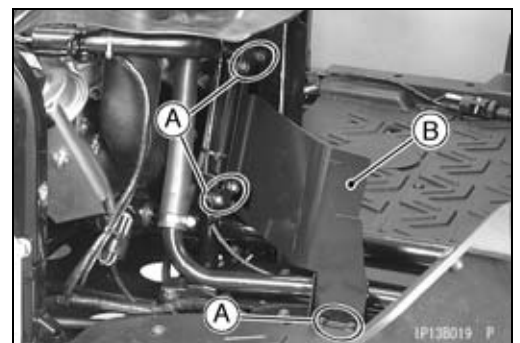
- Install:
 - Quick Rivets [F]
 - Collar [G]: L = 4 mm (0.16 in.)
 - Screw [H]: L = 16 mm (0.63 in.)



IP13004BS2 C

Seat Lower Right Plate Removal

- Remove:
 - Seat Lower Cover (see Seat Lower Cover Removal)
 - Bolts [A] and Brackets
 - Seat Lower Right Plate [B]

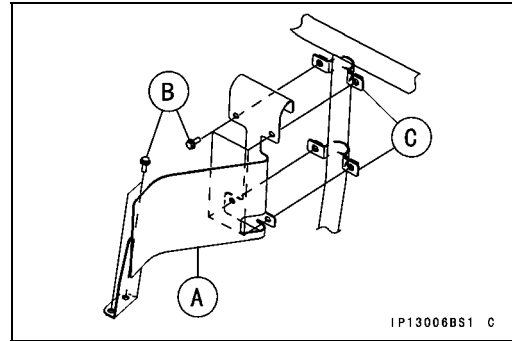


15-40 FRAME

Covers

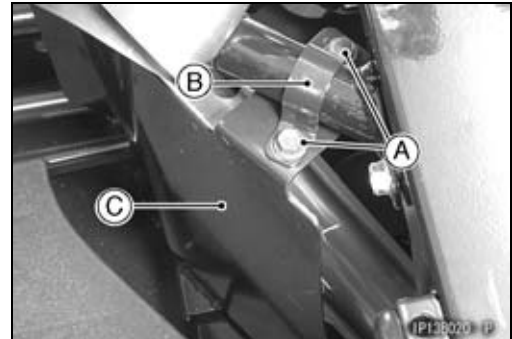
Seat Lower Right Plate Installation

- Install:
 - Seat Lower Right Plate [A]
 - Bolts [B] and Brackets [C]



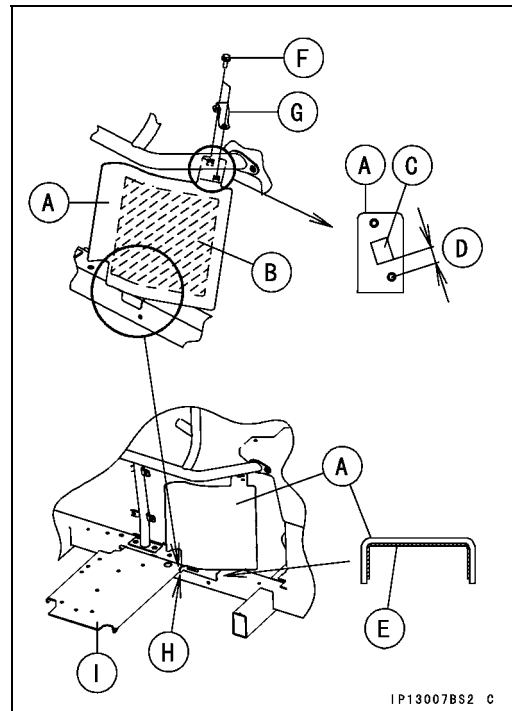
Seat Lower Left Plate Removal

- Removal:
 - Seat Lower Cover (see Seat Lower Cover Removal)
 - Bolts [A] and Brackets [B]
 - Seat Lower Left Plate [C]



Seat Lower Left Plate Installation

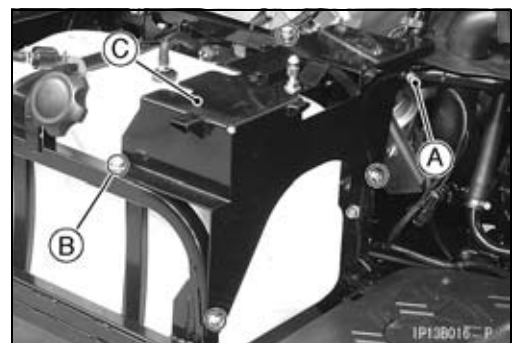
- When installing the insulator and dampers, install them as shown in the figure.
 - Seat Lower Left Plate [A]
 - Insulator [B] (P/No. 16073-0062)
 - Damper [C] (P/No. 92161-0273)
 - 15 mm (0.59 in.) [D]
 - Damper [E] (P/No. 92161-0628)
- Install:
 - Seat Lower Right Plate
 - Bolts [F] and Bracket [G]
- Touch [H] the seat lower left plate to the floor plate [I].



Right and Left Brackets Removal

Right Bracket

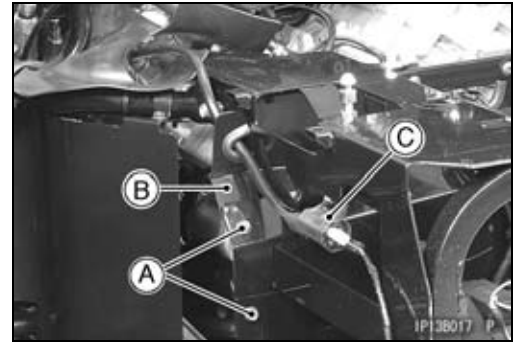
- Remove:
 - Seat Lower Cover (see Seat Lower Cover Removal)
 - Center Bracket Mounting Bolt [A]
 - Bracket Bolts [B]
 - Right Bracket [C]



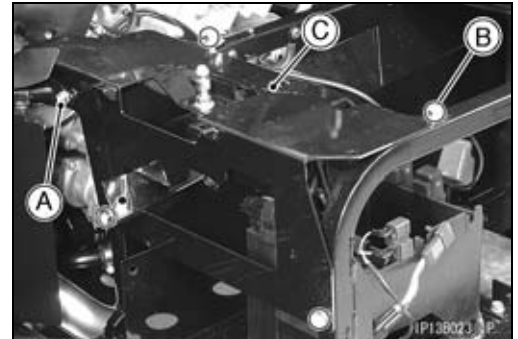
Covers

Left Bracket

- Remove:
 - Seat Lower Cover (see Seat Lower Cover Removal)
 - Plate Bolts [A]
 - Plate [B]
 - Ignition Coil [C]



- Remove:
 - Center Bracket Mounting Bolt [A].
 - Bracket Bolts [B]
 - Left Bracket [C]

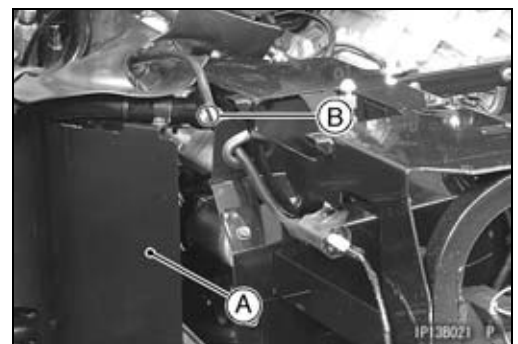


Right and Left Brackets Installation

- Install:
 - Right and Left Brackets
 - Bracket Bolts
- Tighten:
 - Torque - Bracket Bolts: 47 N·m (4.8 kgf·m, 35 ft·lb)**
 - Center Bracket Mounting Bolts: 22 N·m (2.3 kgf·m, 17 ft·lb)**
- Install the removed parts.

Center Bracket Removal

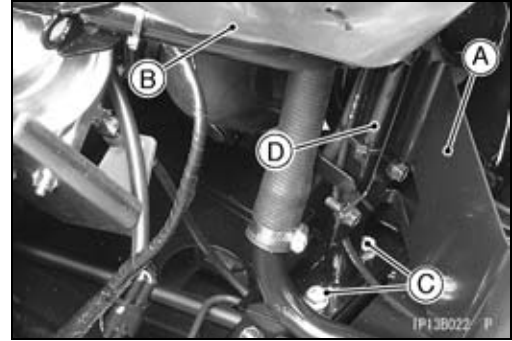
- Remove:
 - Seat Lower Cover (see Seat Lower Cover Removal)
 - Differential Control Cable Rear End
 - Choke Cables Rear Ends
 - Belt Converter Inlet Duct
 - Shift Lever Tie-rod End
 - Front Propeller Shaft (see Front Propeller Shaft Removal in the Final Drive chapter)
 - Seat Lower Left Plate [A] (see Seat Lower Left Plate Removal)
 - Center Bracket Mounting Bolts [B] (both sides)



15-42 FRAME

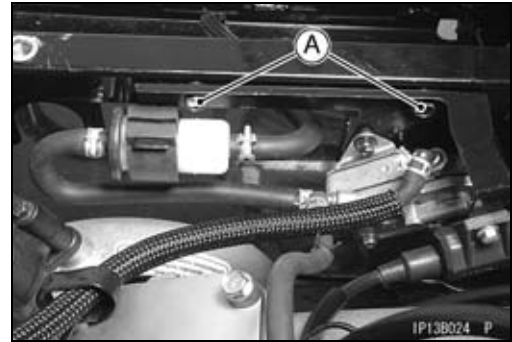
Covers

- Remove:
 - Seat Lower Right Plate [A] (see Seat Lower Right Plate Removal)
 - Rubber Cover [B]
 - Bands (cut)
 - Center Bracket Mounting Bolts [C]
 - Center Bracket Assembly [D]

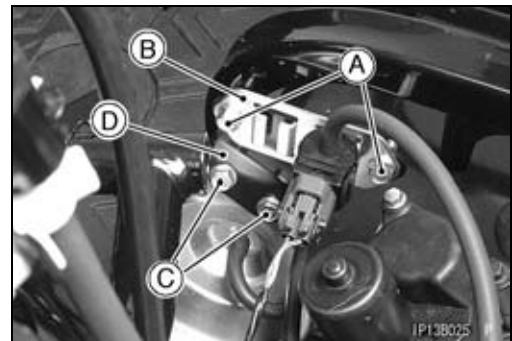


Right Frame Pipe Removal

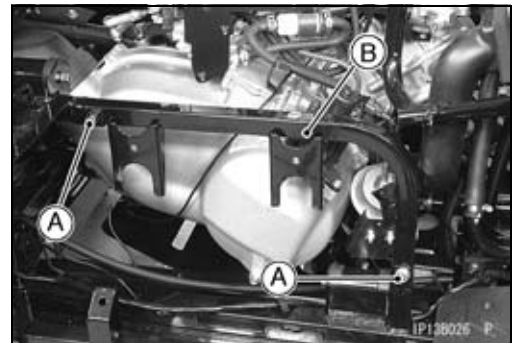
- Remove:
 - Fuel Tank (Fuel Tank Removal in the Fuel System chapter)
 - Fuel Pump Bracket Bolts [A] and Bracket



- Remove:
 - Solenoid Valve Bracket Bolts [A] and Bracket Assembly [B]
 - Vacuum Actuator Bracket Bolts [C] and Bracket Assembly [D]



- Remove:
 - Right Frame Pipe Mounting Bolts [A]
 - Right Frame Pipe [B]



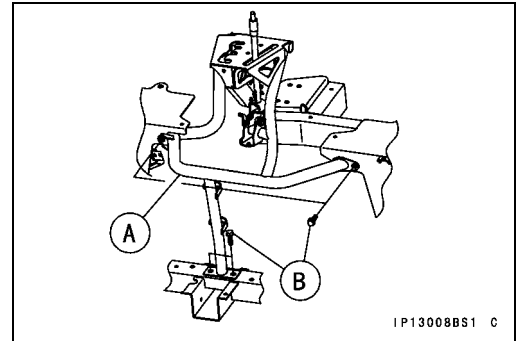
Right Frame Pipe Installation

- Install:
 - Right Frame Pipe and Bolts
- Tighten:
 - Torque - Right Frame Pipe Mounting Bolts: 34.3 N·m (3.5 kgf·m, 25 ft·lb)**
 - Vacuum Actuator Bracket Bolts: 88 N·m (0.90 kgf·m, 78 in·lb)**
 - Solenoid Valve Bracket Bolts: 88 N·m (0.90 kgf·m, 78 in·lb)**
- Install the removed parts.

Covers

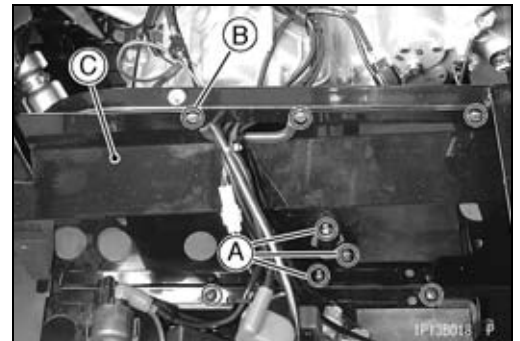
Center Bracket Installation

- Install:
 - Center Bracket Assembly [A]
 - Center Bracket Mounting Bolts [B]
- Tighten:
 - Torque - Center Bracket Mounting Bolts: 22 N·m (2.3 kgf·m, 17 ft·lb)**
- Install the removed parts.



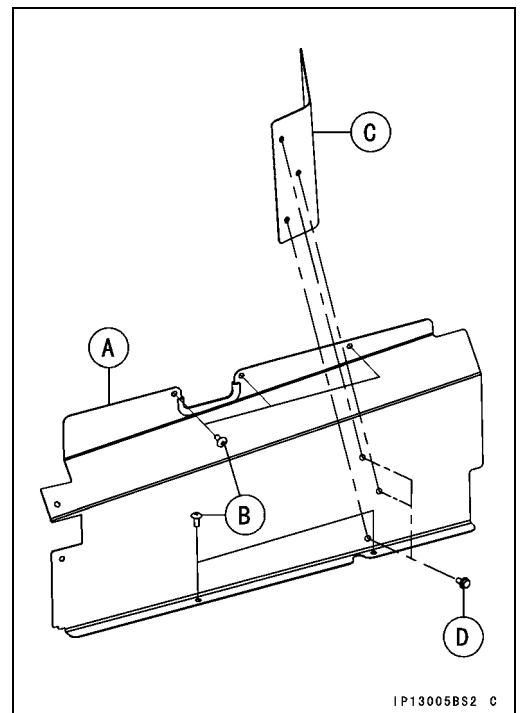
Left Cover Removal

- Remove:
 - Seat Lower Cover (see Seat Lower Cover Removal)
 - Left Bracket (see Right and Left Brackets Installation)
 - Plate Bolts [A] and Plate
 - Tapping Screws [B]
 - Left Cover [C]



Left Cover Installation

- Install:
 - Left Cover [A]
 - Tapping Screws [B]
 - Plate [C]
 - Plate Bolts [D]
- Install the removed parts.

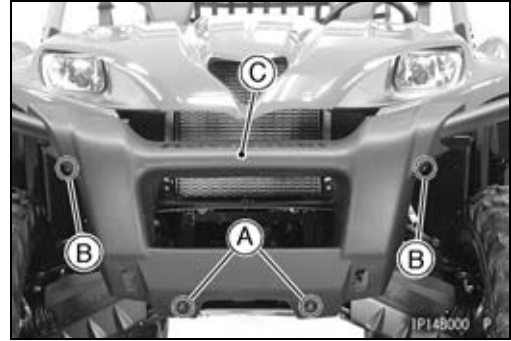


15-44 FRAME

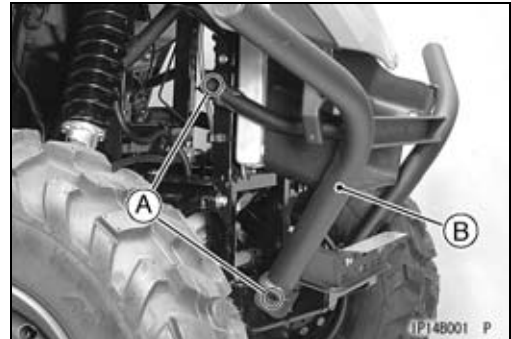
Guards

Front Guard Removal

- Remove:
 - Tapping Screws [A] and Collars
 - Screws [B] and Collars
 - Front Guard Cover [C]

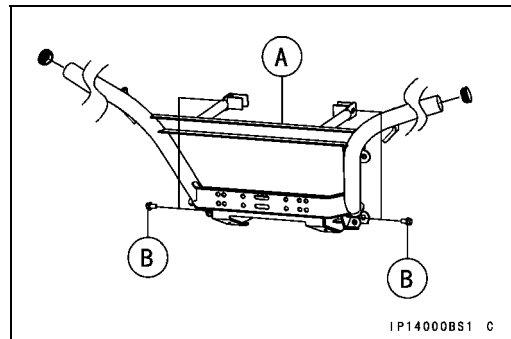


- Remove:
 - Bolts [A] (both sides)
 - Front Guard [B]

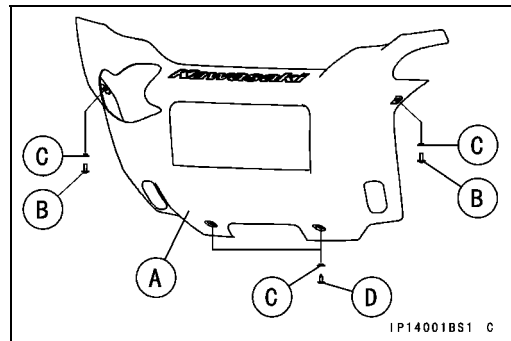


Front Guard Installation

- Install:
 - Front Guard [A]
 - Bolts [B]

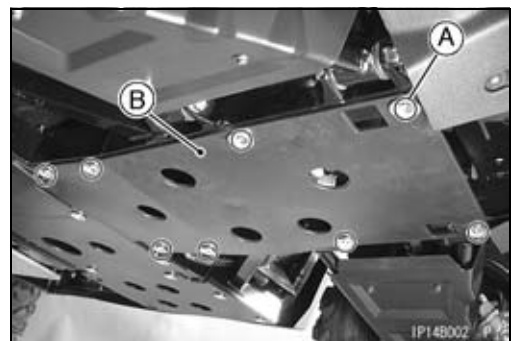


- Install:
 - Front Guard Cover [A]
 - Screws [B] and Collars [C]
 - Tapping Screws [D]



Front Bottom Guard Removal

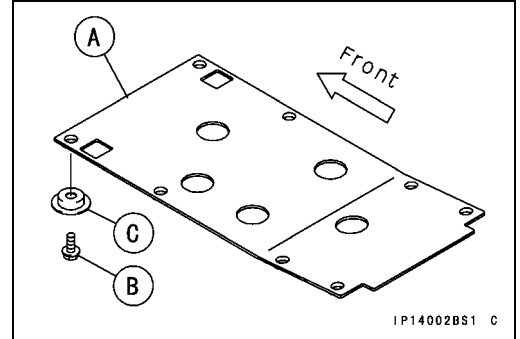
- Remove:
 - Bottom Guard Bolts [A] and Collars
 - Front Bottom Guard [B]



Guards

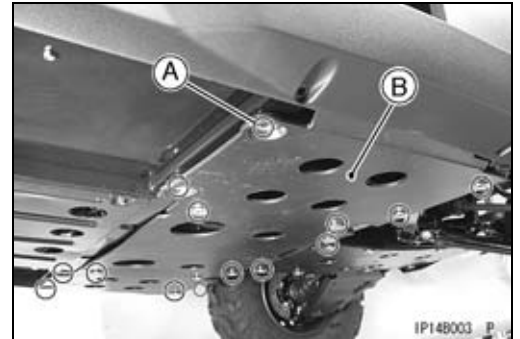
Front Bottom Guard Installation

- Install:
 - Front Bottom Guard [A]
 - Bottom Guard Bolts [B] and Collars [C]



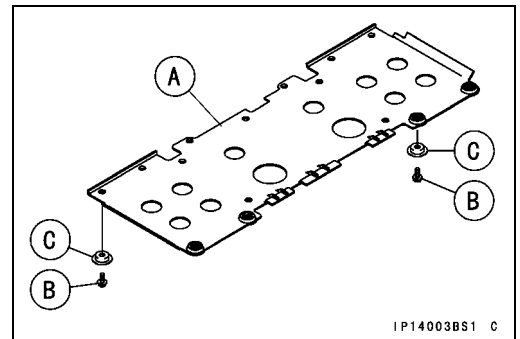
Middle Bottom Guard Removal

- Remove:
 - Bottom Guard Bolts [A] and Collars [C]
 - Middle Bottom Guard [B]



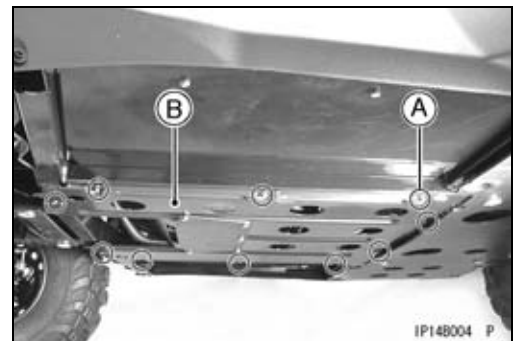
Middle Bottom Guard Installation

- Install:
 - Middle Bottom Guard [A]
 - Bottom Guard Bolts [B] and Collars [C]



Engine Bottom Guard Removal

- Remove:
 - Bottom Guard Bolts [A]
 - Engine Bottom Guard [B]

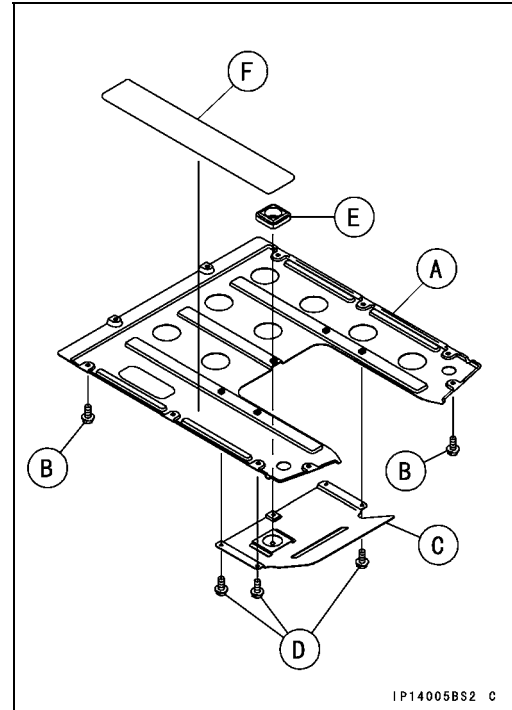


15-46 FRAME

Guards

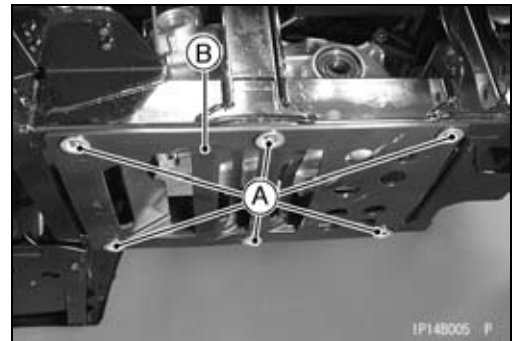
Engine Bottom Guard Installation

- Install:
 - Engine Bottom Guard [A]
 - Bottom Guard Bolts [B]
- When installing the following parts, install them as shown in the figure.
 - Guard [C]
 - Bottom Guard Bolts [D]
 - Damper [E]
 - Insulator [F]



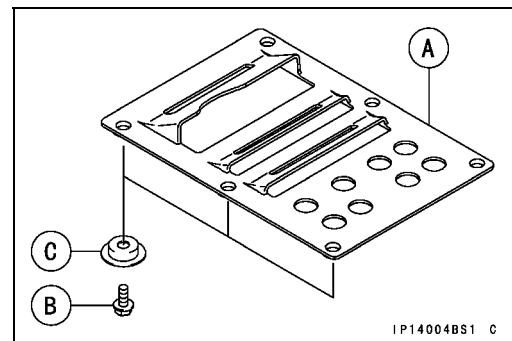
Rear Bottom Guard Removal

- Remove:
 - Bottom Guard Bolts [A] and Collars
 - Rear Bottom Guard [B]



Rear Bottom Guard Installation

- Install:
 - Rear Bottom Guard [A]
 - Bottom Guard Bolts [B] and Collars [C]



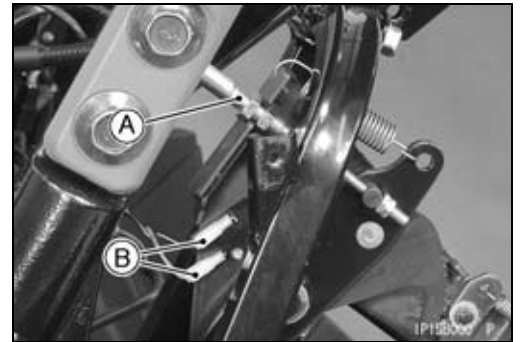
Floorboard

Floorboard Removal

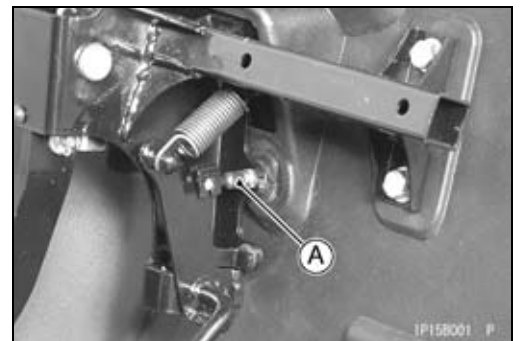
Left Floorboard

- Remove:
 - Control Panel (see Control Panel Removal)
 - Steering Shafts (see Steering Shafts Removal in the Steering chapter)
 - Seat Lower Cover (see Seat Lower Cover Removal)
 - Front Brake Master Cylinder (see Front Brake Master Cylinder Removal in the Brakes chapter)

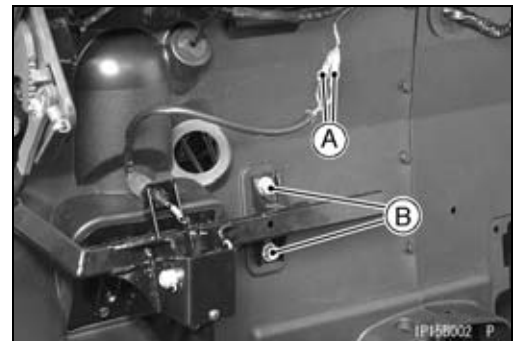
- Remove:
 - Parking Brake Cable [A]
 - Parking Brake Light Switch Lead Connectors [B]



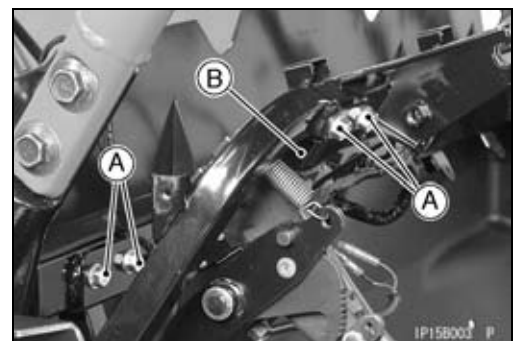
- Remove:
 - Throttle Cable [A]



- Remove:
 - Brake Light Switch Lead Connectors [A]
 - Brake Pedal Bracket Mounting Bolts [B]



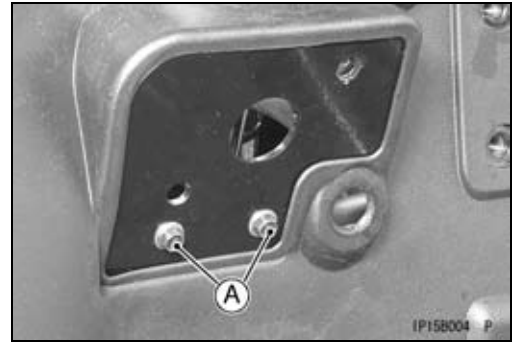
- Remove:
 - Brake Pedal Bracket Mounting Bolts [A]
 - Brake Pedal Bracket [B]



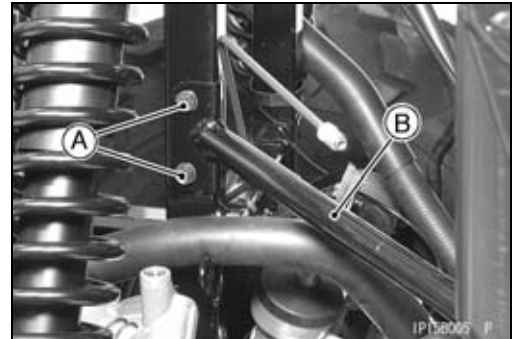
15-48 FRAME

Floorboard

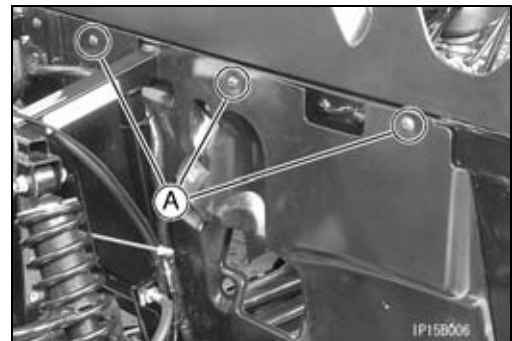
- Remove:
Plate Bolts [A] and Washers



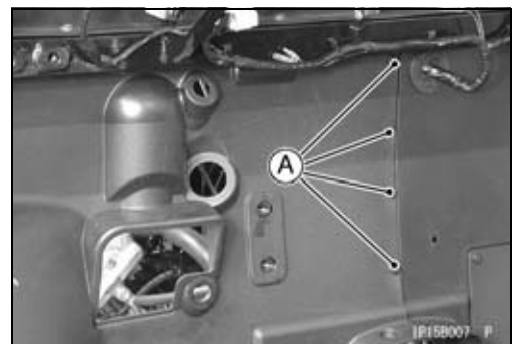
- Remove:
Bracket Bolts [A]
Bracket [B] and Plate



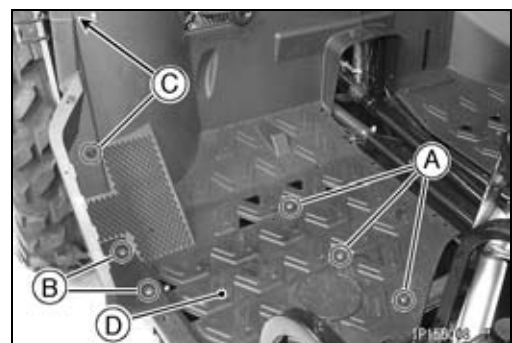
- Remove:
Tapping Screws [A] and Collars



- Remove:
Screws [A] and Collars



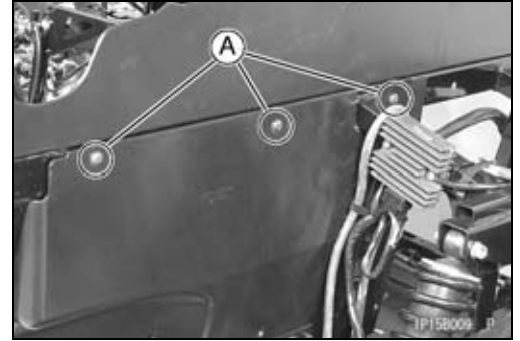
- Remove:
Tapping Screws [A] and Collars
Screws [B] and Collars
Quick Rivets [C]
Left Floorboard [D]



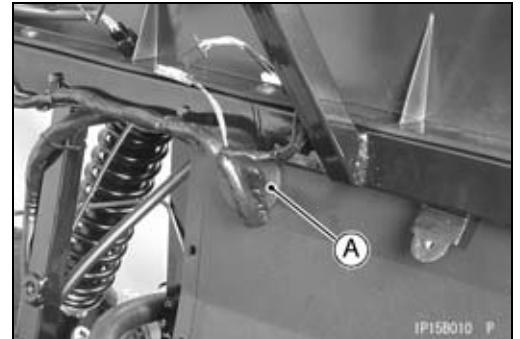
Floorboard

Right Floorboard

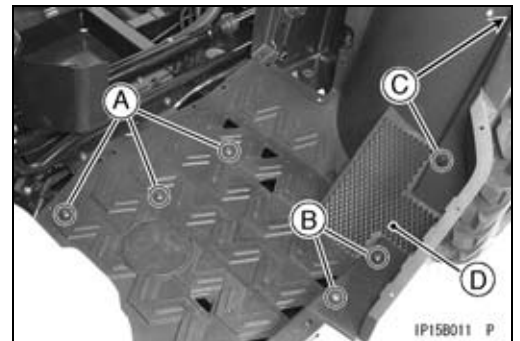
- Remove:
 - Left Floorboard
 - Coolant Reserve Tank (see Coolant Change in the Cooling System chapter)
 - Tapping Screws [A] and Collars



- Remove:
 - Grommet [A]



- Remove:
 - Tapping Screws [A] and Collars
 - Screws [B] and Collars
 - Quick Rivets [C]
 - Right Floorboard [D]

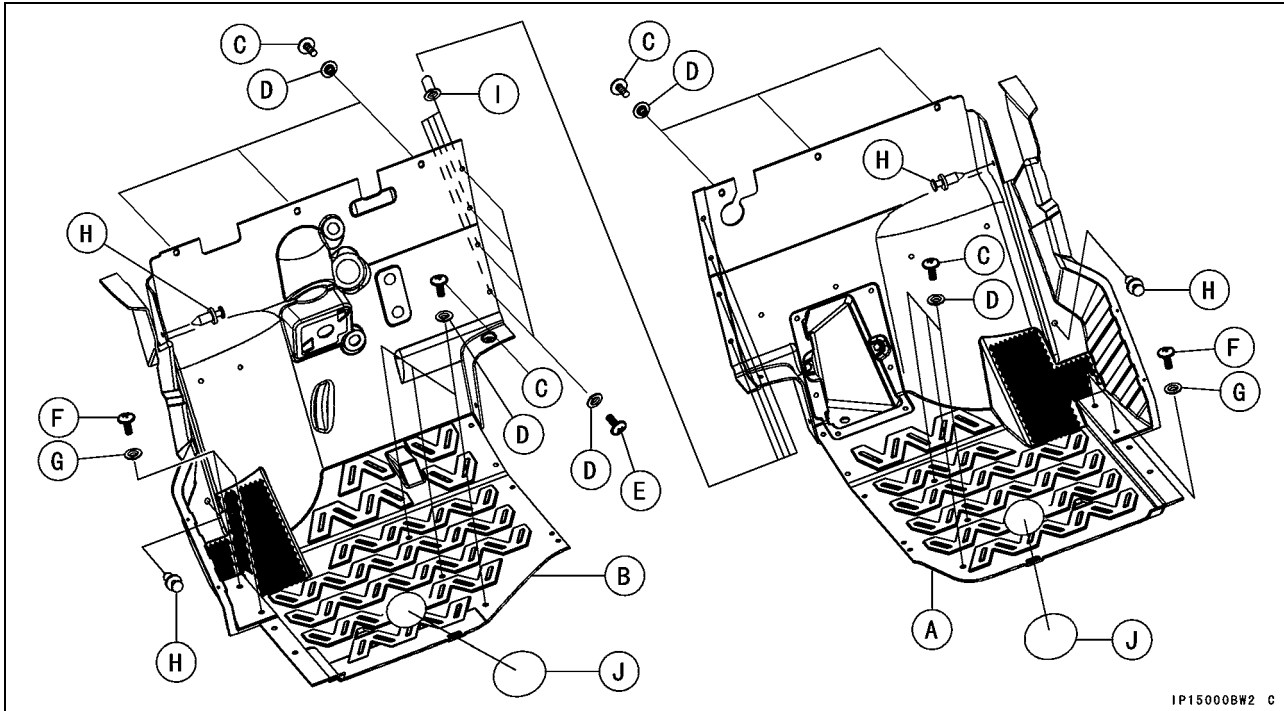


15-50 FRAME

Floorboard

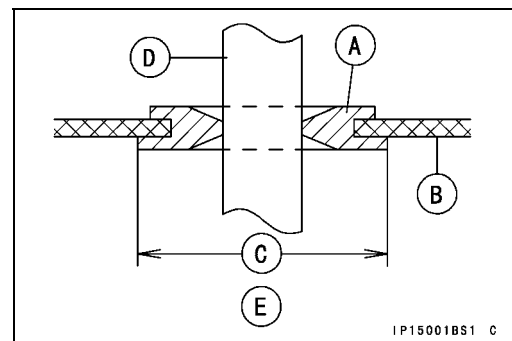
Floorboard Installation

- Install:
 - Right Floorboard [A]
 - Left Floorboard [B]
 - Tapping Screws [C] and Collars [D]: L = 4 mm (0.16 in.)
 - Screws [E] and Collars [D]: L = 4 mm (0.16 in.)
 - Screws [F] and Collars [G]: L = 7 mm (0.28 in.)
 - Quick Rivets [H]
 - Well Nuts [I]
 - Caps [J]



IP1500BW2 C

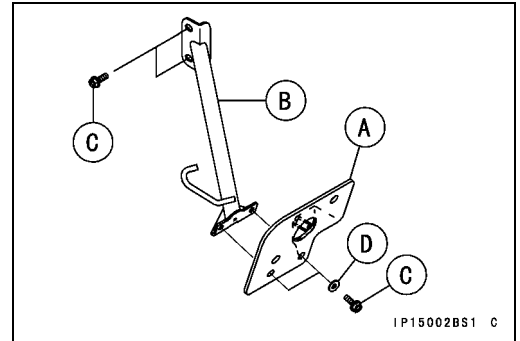
- Install:
 - Coolant Reserve Tank (see Coolant Change in the Cooling System chapter)
- Install the grommet [A] to the right floorboard [B] so that the large diameter [C] side faces forward.
 - Harness [D]
 - Front Side [E]



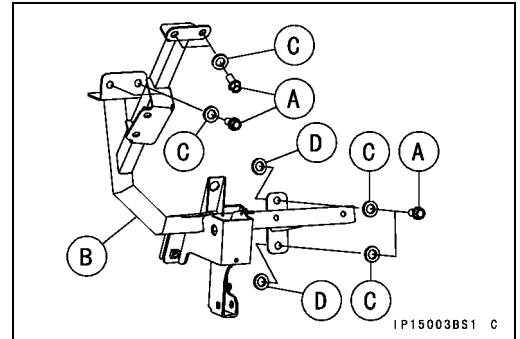
IP15001BS1 C

Floorboard

- Install:
 - Plate [A]
 - Bracket [B]
 - Bolts [C]: M6, L = 18 mm (0.71 in.)
 - Washers [D]: Outside Diameter 15 mm (0.59 in.)



- Apply a non-permanent locking agent to the brake pedal bracket mounting bolts [A].
- Install:
 - Brake Pedal Bracket [B]
 - Washers [C]: Thickness 16 mm (0.63 in.)
 - Washers [D]: Thickness 3.2 mm (0.126 in.)
- Tighten:
 - Torque - Brake Pedal Bracket Mounting Bolts: 34.3 N·m (3.5 kgf·m, 25 ft·lb)**



- Install:
 - Throttle Cable (see Throttle Cable Installation in the Fuel System chapter)
 - Parking Brake Cable (see Parking Brake Cable Installation in the Brakes chapter)
 - Parking Brake Light Switch Lead Connectors
 - Front Brake Master Cylinder (see Front Brake Master Cylinder Installation in the Brakes chapter)
 - Steering Shafts (see Steering Shafts Installation in the Steering chapter)
 - Control Panel (see Control Panel Installation)
 - Seat Lower Cover (see Seat Lower Cover Installation)

**2008 KAWASAKI TERYX 750 4x4
Repair Service Manual KVF750 PDF**

Download Full Service Manual



**Click Link below
or Copy-paste to your browser**

<https://bit.ly/TeryxServiceManual>

OR here

<https://www.downloadservicemanuals.com/product/2008-kawasaki-teryx-750-4x4-repair-service-manual-kvf750-pdf-download/>